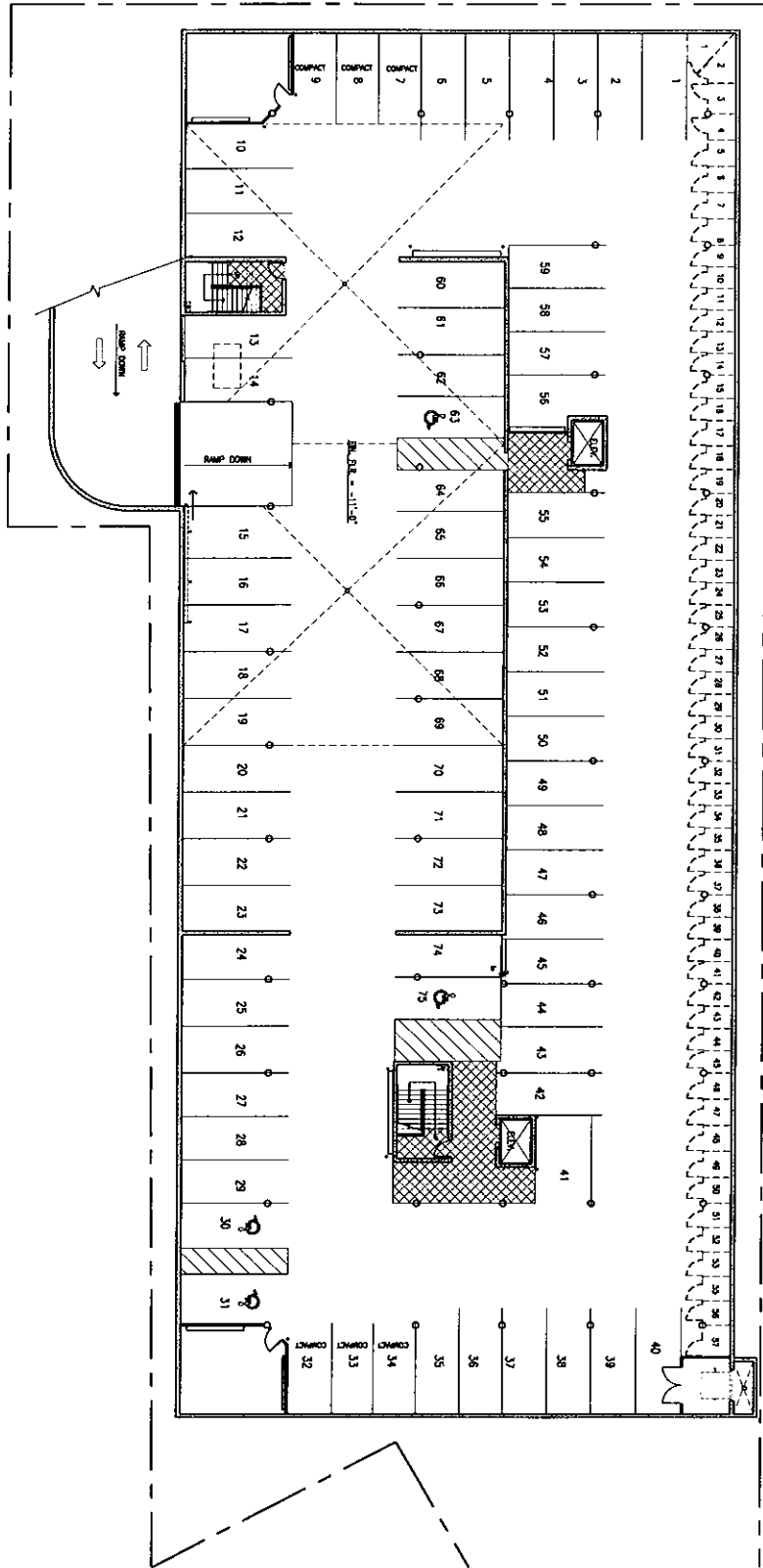


W. GRAND AVENUE

S. 13TH STREET



1 BASEMENT PLAN - PHASE I

SCALE: 1/8" = 1'-0"



THE ARCHITECTS OFFICE #1
 400 MAIN STREET
 BOISE, IDAHO 83725
 V (208) 342-3251
 F (208) 342-1504

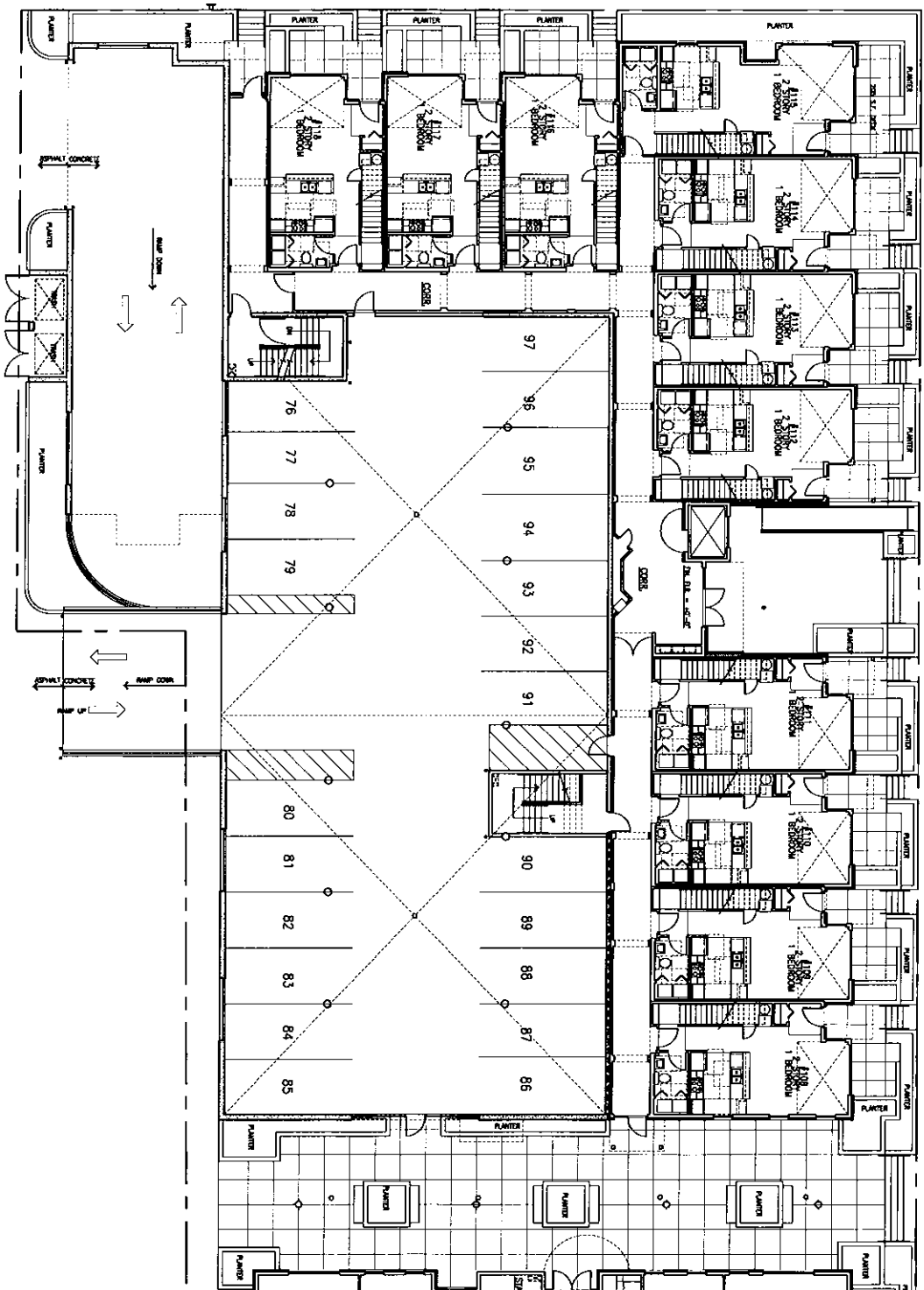
PROJECT
CITYSIDE LOFTS
PHASE I
 402 UNIT RESIDENTIAL
 412 SOUTH 13TH ST.
 BOISE, IDAHO
 PROJECT #06-201



DATE: MAY 19, 2009
 SHEET: 06-201 BASEMENT P1
 PROJECT: CITYSIDE LOFTS PHASE I

SHEET
PHASE I
A2.0
 BASEMENT PLAN

W. GRAND AVENUE



1 FIRST FLOOR PLAN - PHASE I
 SCALE: 1/8" = 1'-0"



THE ARCHITECT'S OFFICE 2
 400 MAIN STREET
 BOISE, IDAHO 83725
 P (208) 342-5271
 F (208) 342-1500

CITYSIDE LOFTS
PHASE I
 42 UNIT RESIDENTIAL
 412 SOUTH 13TH ST.
 BOISE, IDAHO
 PROJECT #106-201

SCALE
 1/8" = 1'-0"

REVISIONS

DATE 10.10.2008

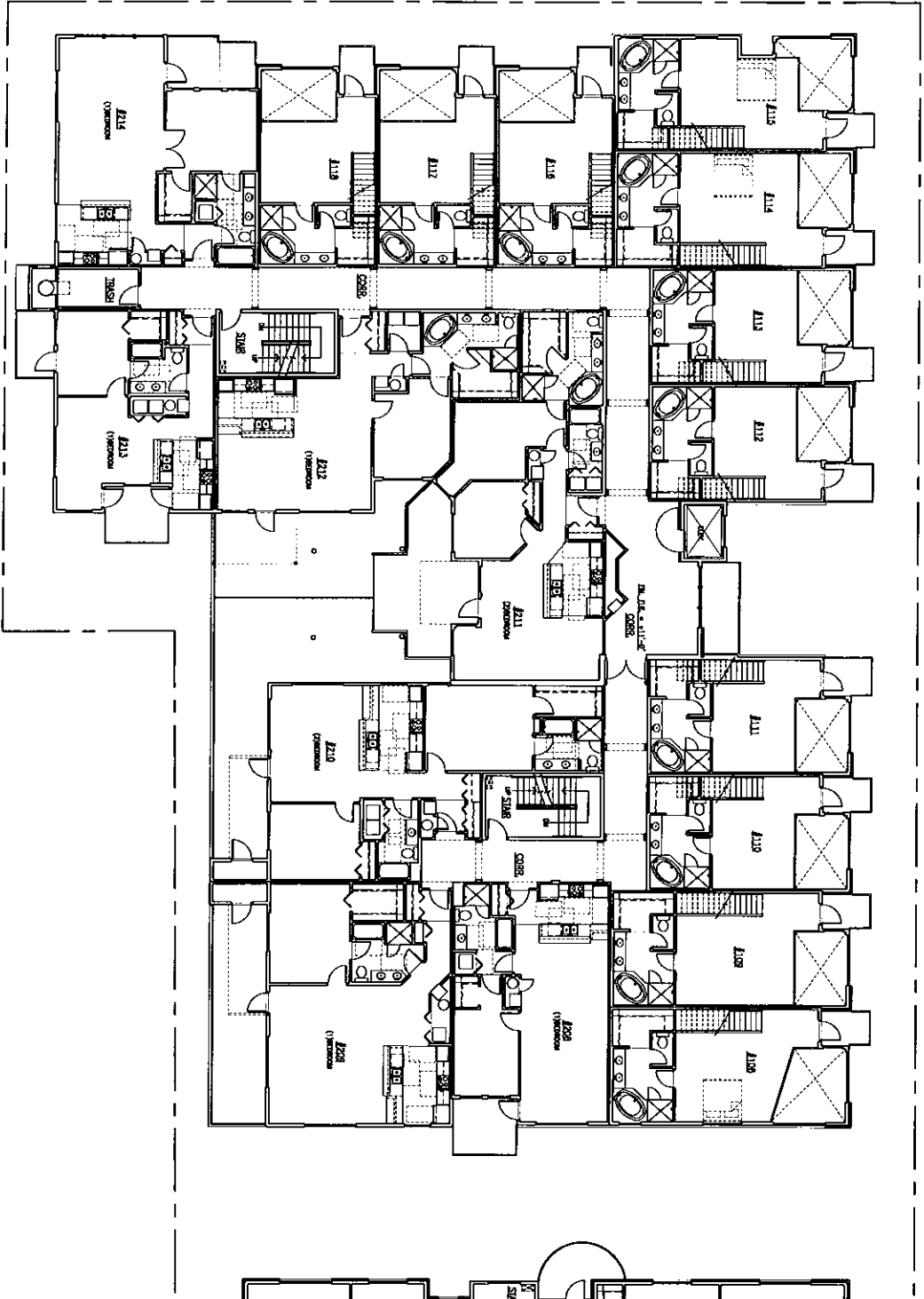
DESIGNER J. B. BARNHART

PROJECT #106-201

PHASE I
A2.1
 FIRST FLOOR PLAN

W. GRAND AVENUE

S. 131H STREET



1 SECOND FLOOR PLAN - PHASE I

SCALE: 1/8" = 1'-0"



THE ARCHITECTS' OFFICE 2
 400 MAIN STREET
 BOISE, IDAHO 83725
 V (208) 343-5201
 F (208) 343-5200

PROJECT
CITYSIDE LOFTS
PHASE I
 42 UNIT RESIDENTIAL
 412 SOUTH 131H ST.
 BOISE, IDAHO
 PROJECT #06-201

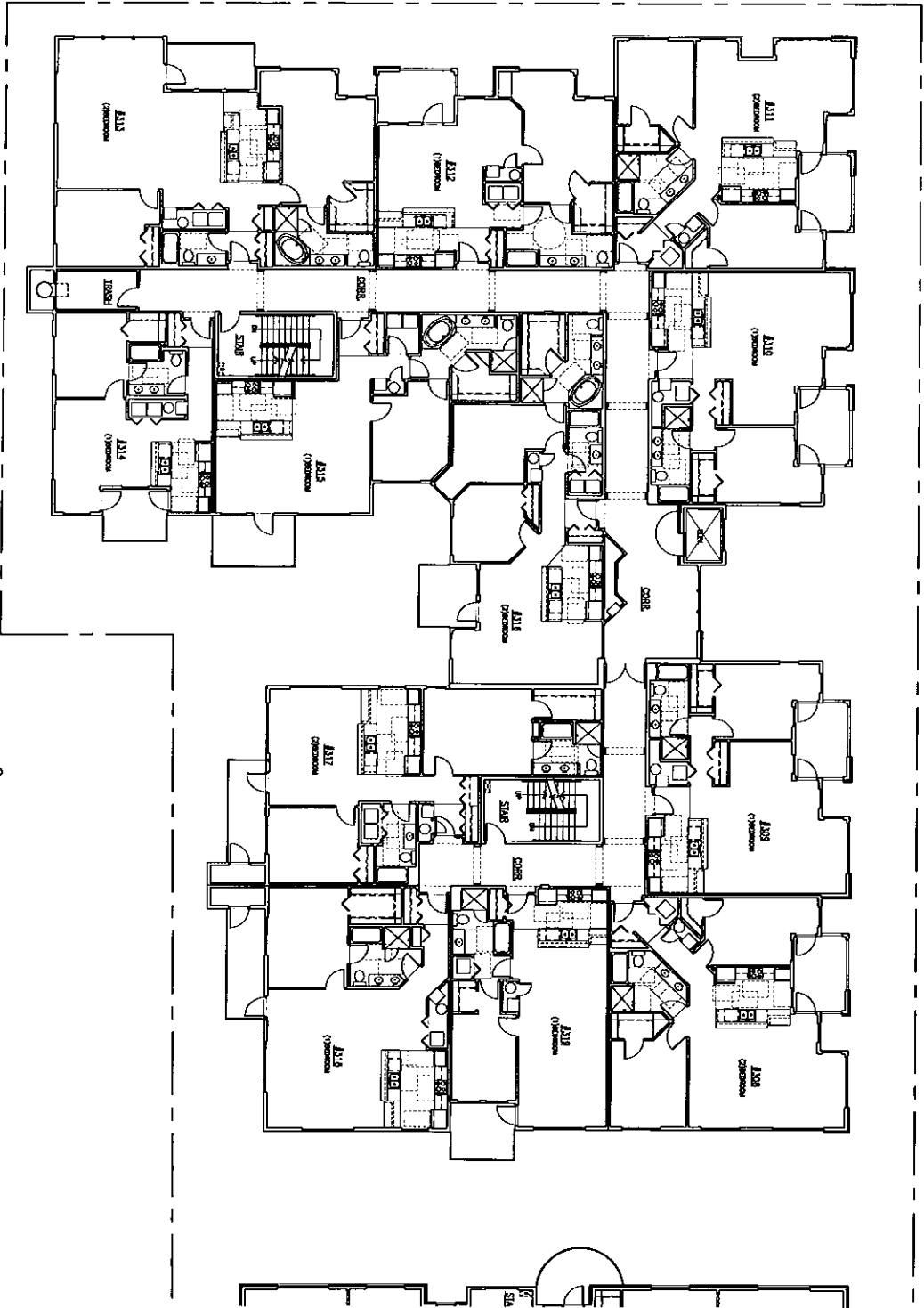


THE ARCHITECTS' OFFICE 2
 400 MAIN STREET
 BOISE, IDAHO 83725
 V (208) 343-5201
 F (208) 343-5200

SHEET
 PHASE I
A2.2
 SECOND FLOOR PLAN

W. GRAND AVENUE

S. 13TH STREET



1 THIRD FLOOR PLAN - PHASE I

SCALE: 1/8" = 1'-0"



THE ARCHITECTS' OFFICE, INC.
 400 MAIN STREET
 BOISE, IDAHO 83725
 V (208) 342-2251
 F (208) 342-1288

CITYSIDE LOFTS
PHASE I
 42 UNIT RESIDENTIAL
 412 SOUTH 13TH ST.
 BOISE, IDAHO
 PROJECT #06-201

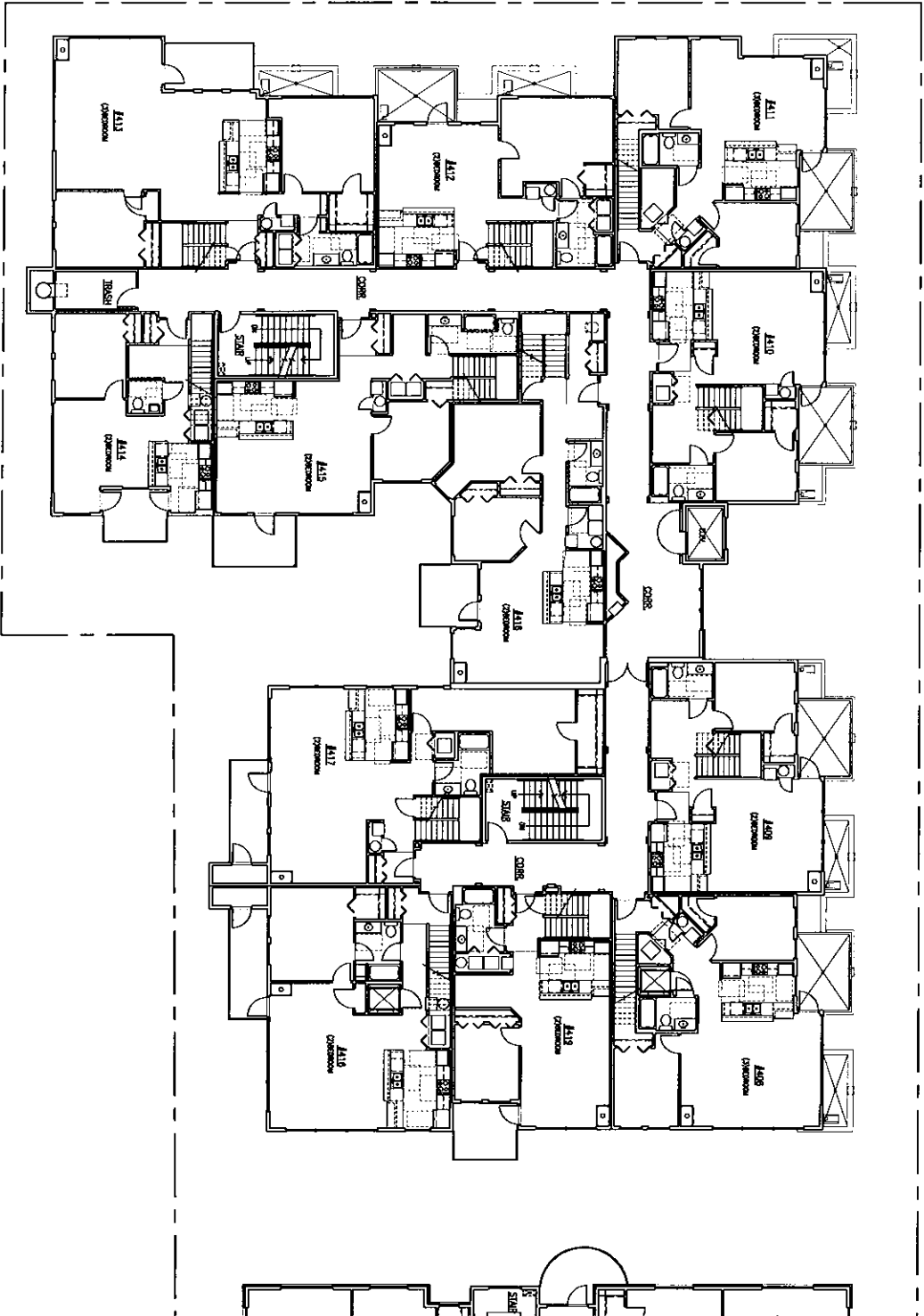


THE SEAL IS THE PROPERTY OF THE ARCHITECTS' OFFICE, INC. AND IS TO BE USED ONLY FOR THE PROJECT AND DATE SPECIFIED THEREON.
 DATE OF EXPIRATION: NONE
 EXPIRES: NONE
 FILE NO. 111,208
 NAME: DR. TERRY THOMPSON
 ADDRESS: 400 MAIN STREET, SUITE 200, BOISE, IDAHO 83725
 PHONE: (208) 342-2251
 FAX: (208) 342-1288
 SIGNATURE: [Handwritten Signature]

SHEET
 PHASE I
A2.3
 THIRD FLOOR PLAN

W. GRAND AVENUE

S. 13TH STREET



1 FOURTH FLOOR PLAN - PHASE I
SCALE: 1/8" = 1'-0"



THE ARCHITECT'S OFFICE I
 420 W. 13TH STREET
 BOISE, IDAHO 83702
 V. (208) 342-5211
 F. (208) 342-1986

PROJECT
CITYSIDE LOFTS
PHASE I
 42 UNIT RESIDENTIAL
 412 SOUTH 13TH ST.
 BOISE, IDAHO
 PROJECT #06-201

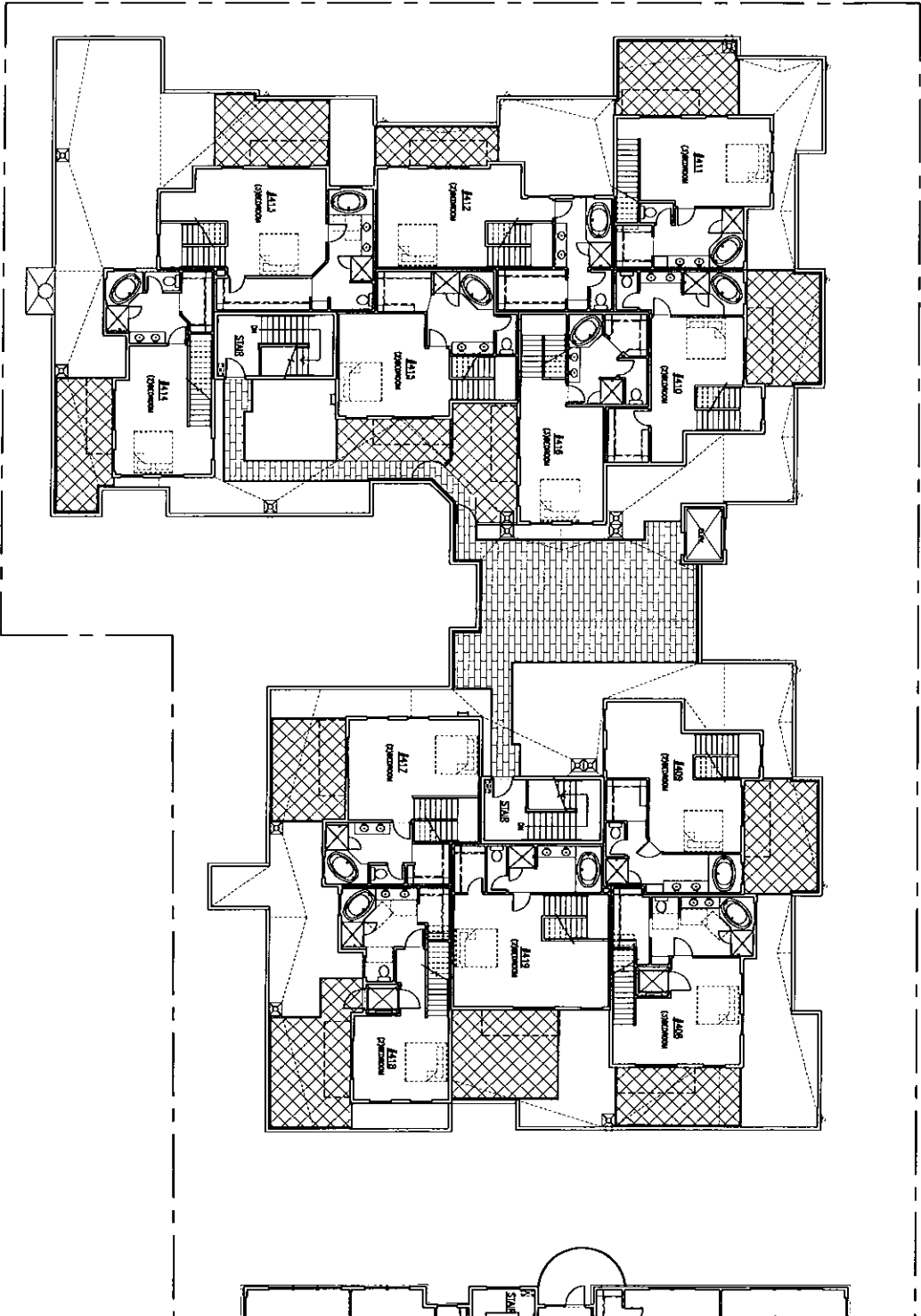


DATE: 07/17/08
 DRAWN BY: [Name]
 CHECKED BY: [Name]
 PROJECT NO.: 06-201

SHEET
 PHASE I
A2.4
 FOURTH FLOOR PLAN

W. GRAND AVENUE

S. 13TH STREET



1 FIFTH FLOOR PLAN - PHASE I

SCALE: 1/8" = 1'-0"



THE ARCHITECT'S OFFICE 1
 400 MAIN STREET
 BOISE, IDAHO 83722
 V (208) 342-2351
 F (208) 342-1200

PROJECT
CITYSIDE LOFTS
PHASE I
 42 UNIT RESIDENTIAL
 412 SOUTH 13TH ST.
 BOISE, IDAHO
 PROJECT #06-201



The Architect is licensed in the State of Idaho.
 The State of Idaho is a member of the International
 Council of Building Officials (ICBO).
 © THE ARCHITECT'S OFFICE, P.C.
 FILE
 MAY 11, 2006
 06:50 AM (PST) (M)
 2P
 REVISIONS

SHEET
 PHASE I
A2.5
 FIFTH FLOOR PLAN