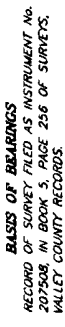


EAGLE RIDGE SUBDIVISION - PHASE 1 & 2

SITUATED IN THE SE1/4 OF SECTION 15, T.16 N., R.3 E., B.M., VALLEY COUNTY, IDAHO 1997

S-12-98 10:00 #100
 BK 8 PG 95
 # 232627



LEGEND

- FOUND 5/8" IRON PIN PER BOOK 7 PLATS PG. 9
- FOUND 5/8" IRON PIN LS 5618 PER ROS No. 204049
- FOUND 1/2" IRON PIN LS 5081 PER ROS No. 207508
- FOUND ALUMINUM CAP MONUMENT
- FOUND BRASS CAP RIGHT-OF-WAY MONUMENT
- SET 5/8" IRON PIN W/PLASTIC CAP LS 8022
- SET 1/2" IRON PIN W/PLASTIC CAP LS 8022
- FOUND 5/8" IRON PIN LS 5081 PER ROS 207508
- () CALCULATED POINT NOTHING SET
- () RECORD DATA PER ROS No. 204049
- () RECORD DATA PER ROS No. 207508
- () RECORD DATA PER BOOK 7 PLATS PG. 9
- () BLOCK NUMBER

RESTRICTIVE COVENANTS

INSTRUMENT NUMBER **232627**

LOT DEVELOPMENT AND BUILDING OCCUPANCY IN THIS SUBDIVISION SHALL BE SUBJECT TO THE CONDITIONS ESTABLISHED BY THE RESTRICTIVE COVENANTS SET FORTH ON PAGE _____ MISCELLANEOUS RECORDS, VALLEY COUNTY, IDAHO.

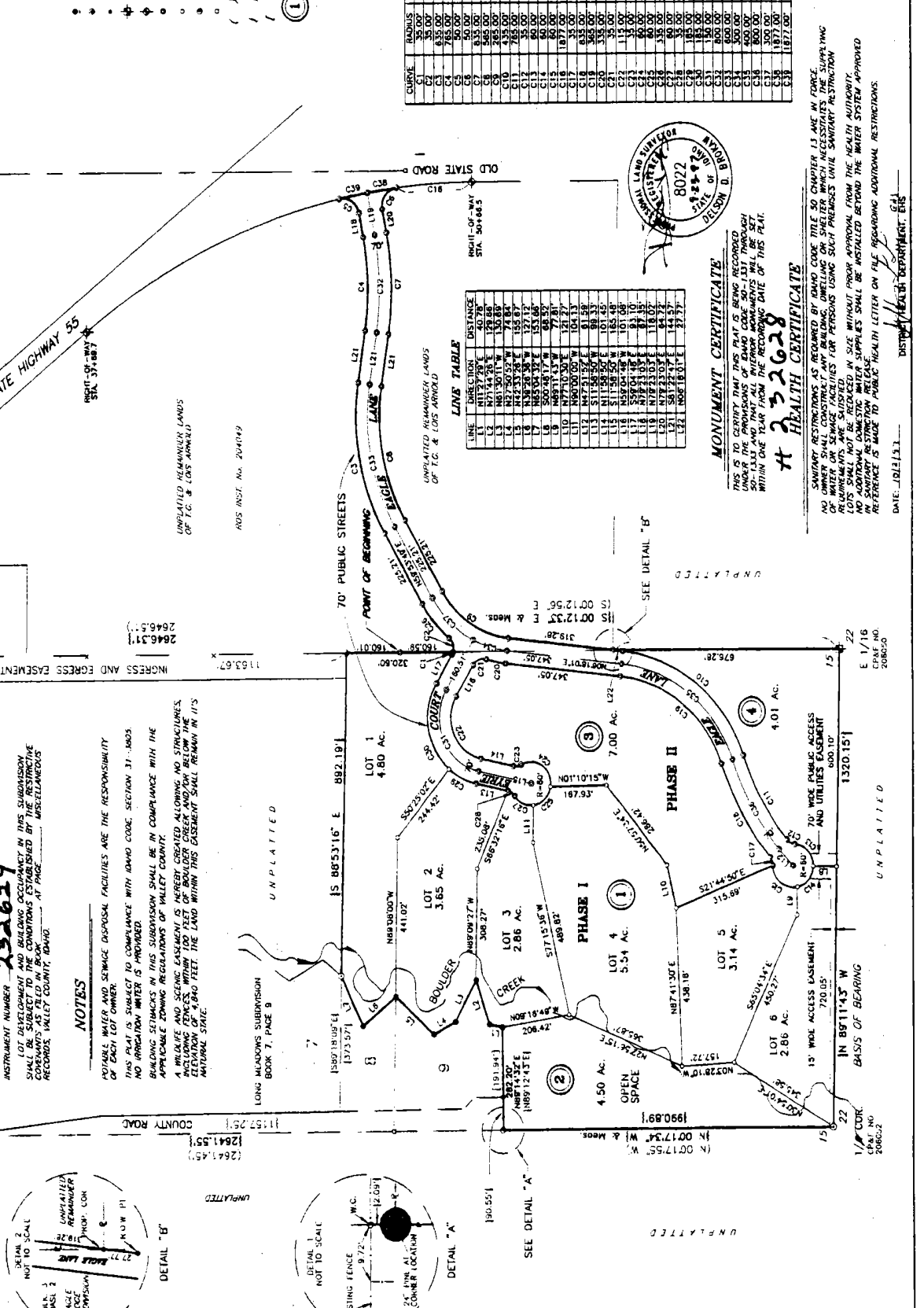
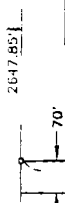
NOTES

POTABLE WATER AND SEWAGE DISPOSAL FACILITIES ARE THE RESPONSIBILITY OF EACH LOT OWNER.

THIS PLAT IS SUBJECT TO COMPLIANCE WITH IDAHO CODE, SECTION 31-1803. NO IRRIGATION WATER IS PROVIDED.

BUILDING SETBACKS IN THIS SUBDIVISION SHALL BE IN COMPLIANCE WITH THE APPLICABLE ZONING REGULATIONS OF VALLEY COUNTY.

A MINIMUM 10' SETBACK SHALL BE MAINTAINED FROM ALL EXISTING AND PROPOSED BOUNDARIES OF NEIGHBORING LOTS. THE ELEVATION OF 4840 FEET THE LAND WITHIN THIS EASEMENT SHALL REMAIN IN ITS NATURAL STATE.



LINE TABLE

LINE	DIRECTION	DISTANCE
L1	N112°27'00\"	60.76
L2	N71°40'00\"	130.88
L3	N112°27'00\"	130.88
L4	N112°27'00\"	130.88
L5	N43°33'28\"	155.67
L6	N112°27'00\"	130.88
L7	N112°27'00\"	130.88
L8	S00°48'17\"	68.92
L9	N89°11'43\"	77.81
L10	N77°10'20\"	121.77
L11	N112°27'00\"	130.88
L12	N47°51'57\"	81.58
L13	S11°56'50\"	88.33
L14	N112°27'00\"	130.88
L15	N112°27'00\"	130.88
L16	S11°56'50\"	88.33
L17	S89°04'18\"	101.08
L18	N79°23'03\"	87.15
L19	N112°27'00\"	130.88
L20	S81°22'17\"	144.57
L21	N06°18'01\"	27.77

CURVE TABLE

CURVE	RADIUS	LENGTH	TANGENT	CHORD	BEARING	DELTA
C1	35.00	7.74	3.89	7.72	S45°24'51\"	17°40'11\"
C2	35.00	42.26	24.36	38.88	N77°24'51\"	67°40'11\"
C3	35.00	25.84	12.92	25.83	N87°00'00\"	18°14'14\"
C4	50.00	60.09	31.56	51.56	N33°20'00\"	81°18'48\"
C5	50.00	81.64	40.82	72.87	N33°20'00\"	81°18'48\"
C6	50.00	81.64	40.82	72.87	N33°20'00\"	81°18'48\"
C7	35.00	7.74	3.89	7.72	N33°20'00\"	17°40'11\"
C8	35.00	42.26	24.36	38.88	N33°20'00\"	67°40'11\"
C9	35.00	7.74	3.89	7.72	N33°20'00\"	17°40'11\"
C10	35.00	42.26	24.36	38.88	N33°20'00\"	67°40'11\"
C11	35.00	7.74	3.89	7.72	N33°20'00\"	17°40'11\"
C12	35.00	42.26	24.36	38.88	N33°20'00\"	67°40'11\"
C13	35.00	7.74	3.89	7.72	N33°20'00\"	17°40'11\"
C14	35.00	42.26	24.36	38.88	N33°20'00\"	67°40'11\"
C15	35.00	7.74	3.89	7.72	N33°20'00\"	17°40'11\"
C16	35.00	42.26	24.36	38.88	N33°20'00\"	67°40'11\"
C17	35.00	7.74	3.89	7.72	N33°20'00\"	17°40'11\"
C18	35.00	42.26	24.36	38.88	N33°20'00\"	67°40'11\"
C19	35.00	7.74	3.89	7.72	N33°20'00\"	17°40'11\"
C20	35.00	42.26	24.36	38.88	N33°20'00\"	67°40'11\"
C21	35.00	7.74	3.89	7.72	N33°20'00\"	17°40'11\"
C22	35.00	42.26	24.36	38.88	N33°20'00\"	67°40'11\"
C23	35.00	7.74	3.89	7.72	N33°20'00\"	17°40'11\"
C24	35.00	42.26	24.36	38.88	N33°20'00\"	67°40'11\"
C25	35.00	7.74	3.89	7.72	N33°20'00\"	17°40'11\"
C26	35.00	42.26	24.36	38.88	N33°20'00\"	67°40'11\"
C27	35.00	7.74	3.89	7.72	N33°20'00\"	17°40'11\"
C28	35.00	42.26	24.36	38.88	N33°20'00\"	67°40'11\"
C29	35.00	7.74	3.89	7.72	N33°20'00\"	17°40'11\"
C30	35.00	42.26	24.36	38.88	N33°20'00\"	67°40'11\"
C31	35.00	7.74	3.89	7.72	N33°20'00\"	17°40'11\"
C32	35.00	42.26	24.36	38.88	N33°20'00\"	67°40'11\"
C33	35.00	7.74	3.89	7.72	N33°20'00\"	17°40'11\"
C34	35.00	42.26	24.36	38.88	N33°20'00\"	67°40'11\"
C35	35.00	7.74	3.89	7.72	N33°20'00\"	17°40'11\"
C36	35.00	42.26	24.36	38.88	N33°20'00\"	67°40'11\"
C37	35.00	7.74	3.89	7.72	N33°20'00\"	17°40'11\"
C38	35.00	42.26	24.36	38.88	N33°20'00\"	67°40'11\"
C39	35.00	7.74	3.89	7.72	N33°20'00\"	17°40'11\"
C40	35.00	42.26	24.36	38.88	N33°20'00\"	67°40'11\"
C41	35.00	7.74	3.89	7.72	N33°20'00\"	17°40'11\"
C42	35.00	42.26	24.36	38.88	N33°20'00\"	67°40'11\"
C43	35.00	7.74	3.89	7.72	N33°20'00\"	17°40'11\"
C44	35.00	42.26	24.36	38.88	N33°20'00\"	67°40'11\"
C45	35.00	7.74	3.89	7.72	N33°20'00\"	17°40'11\"
C46	35.00	42.26	24.36	38.88	N33°20'00\"	67°40'11\"
C47	35.00	7.74	3.89	7.72	N33°20'00\"	17°40'11\"
C48	35.00	42.26	24.36	38.88	N33°20'00\"	67°40'11\"
C49	35.00	7.74	3.89	7.72	N33°20'00\"	17°40'11\"
C50	35.00	42.26	24.36	38.88	N33°20'00\"	67°40'11\"

MONUMENT CERTIFICATE

THIS IS TO CERTIFY THAT THIS PLAT IS BEING RECORDED UNDER THE PROVISIONS OF IDAHO CODE 30-1331 THROUGH 30-1333 AND THAT ALL MONUMENTS WILL BE SET WITHIN ONE YEAR FROM THE RECORDING DATE OF THIS PLAT.

HEALTH CERTIFICATE

SEWAGE RESTRICTIONS AS REQUIRED BY IDAHO CODE TITLE 30 CHAPTER 15 ARE IN FORCE. NO WATER OR SEWAGE FACILITIES FOR PERSONS USING SUCH PREMISES UNTIL SANITARY RESTRICTIONS ARE REMOVED. ALL SEWER LINES SHALL BE INSTALLED WITHOUT PROPER APPROVAL FROM THE HEALTH AGENCY. NO ADDITIONAL DOMESTIC WATER SUPPLIES SHALL BE INSTALLED BEYOND THE WATER SYSTEM APPROVED IN SANITARY RESTRICTIONS RELEASE. REFERENCE IS MADE TO PUBLIC HEALTH LETTER ON FILE REGARDING ADDITIONAL RESTRICTIONS.

DATE: 10/12/97

DISTRICT HEALTH DEPARTMENT: EHE

FOOTMAN-DIXON ENGINEERING COMPANY

300 DENVER BLVD. S.W. ALBUQUERQUE, N.M. 87102
 M.C. DIXON, P.E. (202) 637-4883

SECRET NO. 1 OF 8