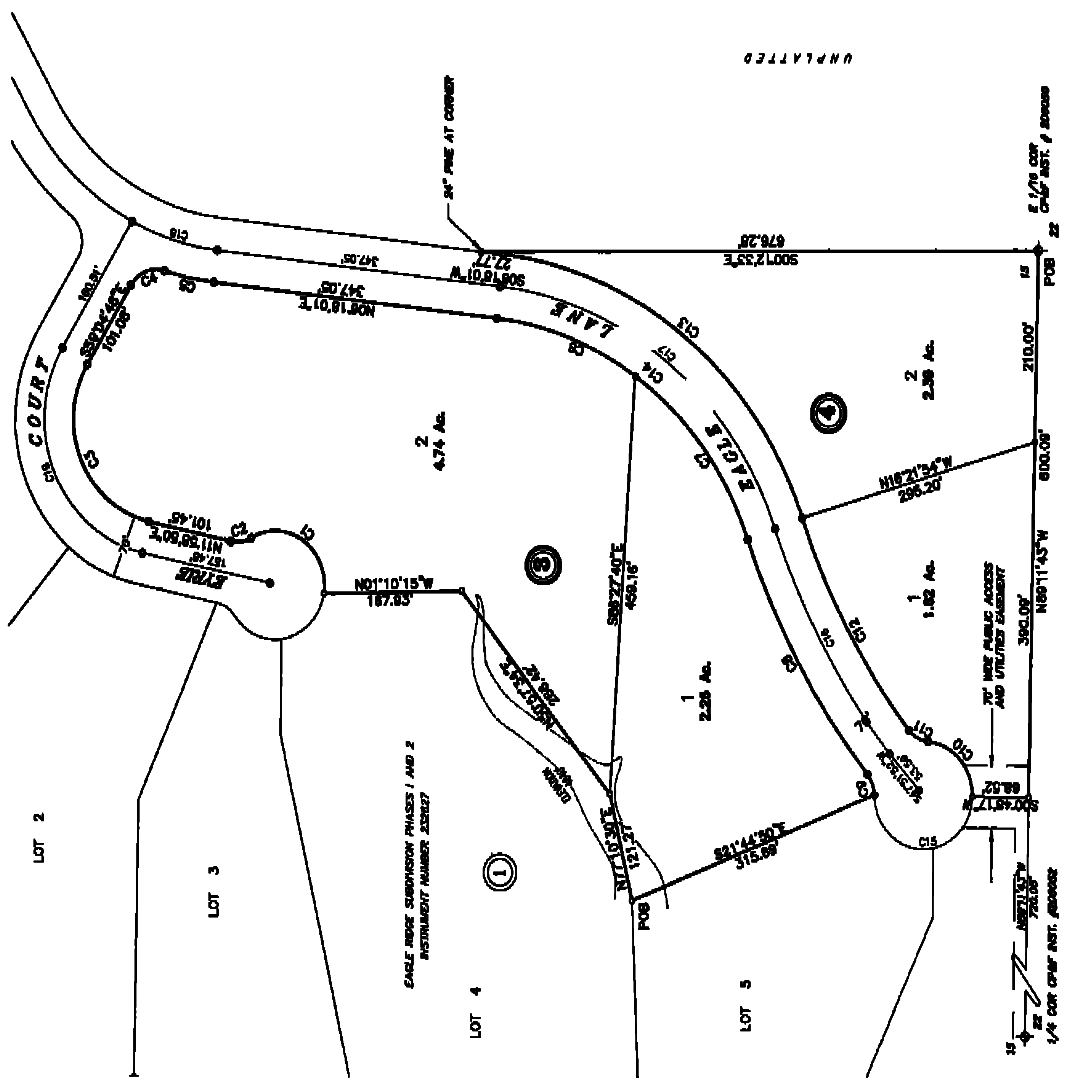


**Instrument # 287945**  
 VALLEY COUNTY, CASCADE, IDAHO  
 2004-09-29 04:12:09 No. of Pages: 1  
 Recorded for: SECESH ENG  
 LELAND G. HEINRICH  
 Ex-Officio Recorder Deputy  
 Index to: PLAT

# EAGLE RIDGE SUBDIVISION PHASE 2

A Replat of Blocks 3 and 4 of Eagle Ridge Subdivision Phase 1 & 2  
 Located in  
 The SE1/4 OF Section 15, T.16 N., R.3 E., B.M.,  
 Valley County, Idaho



**RESTRICTIVE COVENANTS**

LOT DEVELOPMENT AND BUILDING OCCUPANCY IN THIS SUBDIVISION SHALL BE SUBJECT TO THE COVENANTS ESTABLISHED BY THE RESTRICTIVE COVENANT INSTRUMENT NUMBER 28689, RECORDS OF VALLEY COUNTY, IDAHO.

**NOTES**

THERE SHALL BE NO FURTHER DIVISION OF ANY LOT DEPICTED ON THIS PLAN FOR WATER AND SEWERAGE DISPOSAL. FACILITIES ARE THE RESPONSIBILITY OF EACH LOT OWNER.

THIS PLAN IS SUBJECT TO COMPLIANCE WITH BANNED CODE SECTION 31-1003. NO PROVISION HEREIN IS PROMISED.

ALL PLANNING SERVICES IN THIS SUBDIVISION SHALL BE IN COMPLIANCE WITH THE APPLICABLE ZONING REGULATIONS OF VALLEY COUNTY.

ALL UTILITIES SHALL BE INSTALLED AND MAINTAINED IN ACCORDANCE WITH THE ELEVATION OF 5,240 FEET, AS SHOWN. THE LAND WITHIN THIS EASEMENT SHALL REMAIN IN ITS ORIGINAL STATE.

**LEGEND**

- ◆ FOUND ALUMINUM CAP MONUMENT
- FOUND 5/8" IRON PIN W/PLASTIC CAP LS 8022
- FOUND 1/2" IRON PIN W/PLASTIC CAP LS 8022
- SET 1/2" IRON PIN MKD. LS 8077
- CALCULATED POINT NOTHING SET
- ① BLOCK NUMBER

CURVE	RADIUS	LENGTH	TIMESET	DELTA	BEARING	CHORD
C1	60.00	154.30	154.30	180.00°	N42°28'00"W	107.97
C2	38.00	24.48	24.48	61.93°	S08°51'00"E	24.89
C3	15.00	31.42	31.42	90.00°	S89°27'00"W	16.78
C4	38.00	24.48	24.48	118.07°	S11°27'00"W	24.89
C5	58.00	45.98	45.98	127.25°	S11°17'00"W	46.31
C6	38.00	24.48	24.48	157.25°	S22°24'00"E	24.89
C7	38.00	24.48	24.48	187.25°	S62°24'00"E	24.89
C8	38.00	24.48	24.48	217.25°	S12°24'00"W	24.89
C9	38.00	24.48	24.48	247.25°	S62°24'00"W	24.89
C10	38.00	24.48	24.48	277.25°	S12°24'00"E	24.89
C11	38.00	24.48	24.48	307.25°	S62°24'00"E	24.89
C12	38.00	24.48	24.48	337.25°	S12°24'00"W	24.89
C13	38.00	24.48	24.48	367.25°	S62°24'00"W	24.89
C14	38.00	24.48	24.48	397.25°	S12°24'00"E	24.89
C15	38.00	24.48	24.48	427.25°	S62°24'00"E	24.89
C16	38.00	24.48	24.48	457.25°	S12°24'00"W	24.89
C17	38.00	24.48	24.48	487.25°	S62°24'00"W	24.89
C18	38.00	24.48	24.48	517.25°	S12°24'00"E	24.89
C19	38.00	24.48	24.48	547.25°	S62°24'00"E	24.89
C20	38.00	24.48	24.48	577.25°	S12°24'00"W	24.89
C21	38.00	24.48	24.48	607.25°	S62°24'00"W	24.89
C22	38.00	24.48	24.48	637.25°	S12°24'00"E	24.89
C23	38.00	24.48	24.48	667.25°	S62°24'00"E	24.89
C24	38.00	24.48	24.48	697.25°	S12°24'00"W	24.89
C25	38.00	24.48	24.48	727.25°	S62°24'00"W	24.89
C26	38.00	24.48	24.48	757.25°	S12°24'00"E	24.89
C27	38.00	24.48	24.48	787.25°	S62°24'00"E	24.89
C28	38.00	24.48	24.48	817.25°	S12°24'00"W	24.89
C29	38.00	24.48	24.48	847.25°	S62°24'00"W	24.89
C30	38.00	24.48	24.48	877.25°	S12°24'00"E	24.89
C31	38.00	24.48	24.48	907.25°	S62°24'00"E	24.89
C32	38.00	24.48	24.48	937.25°	S12°24'00"W	24.89
C33	38.00	24.48	24.48	967.25°	S62°24'00"W	24.89
C34	38.00	24.48	24.48	997.25°	S12°24'00"E	24.89
C35	38.00	24.48	24.48	1027.25°	S62°24'00"E	24.89
C36	38.00	24.48	24.48	1057.25°	S12°24'00"W	24.89
C37	38.00	24.48	24.48	1087.25°	S62°24'00"W	24.89
C38	38.00	24.48	24.48	1117.25°	S12°24'00"E	24.89
C39	38.00	24.48	24.48	1147.25°	S62°24'00"E	24.89
C40	38.00	24.48	24.48	1177.25°	S12°24'00"W	24.89
C41	38.00	24.48	24.48	1207.25°	S62°24'00"W	24.89
C42	38.00	24.48	24.48	1237.25°	S12°24'00"E	24.89
C43	38.00	24.48	24.48	1267.25°	S62°24'00"E	24.89
C44	38.00	24.48	24.48	1297.25°	S12°24'00"W	24.89
C45	38.00	24.48	24.48	1327.25°	S62°24'00"W	24.89
C46	38.00	24.48	24.48	1357.25°	S12°24'00"E	24.89
C47	38.00	24.48	24.48	1387.25°	S62°24'00"E	24.89
C48	38.00	24.48	24.48	1417.25°	S12°24'00"W	24.89
C49	38.00	24.48	24.48	1447.25°	S62°24'00"W	24.89
C50	38.00	24.48	24.48	1477.25°	S12°24'00"E	24.89
C51	38.00	24.48	24.48	1507.25°	S62°24'00"E	24.89
C52	38.00	24.48	24.48	1537.25°	S12°24'00"W	24.89
C53	38.00	24.48	24.48	1567.25°	S62°24'00"W	24.89
C54	38.00	24.48	24.48	1597.25°	S12°24'00"E	24.89
C55	38.00	24.48	24.48	1627.25°	S62°24'00"E	24.89
C56	38.00	24.48	24.48	1657.25°	S12°24'00"W	24.89
C57	38.00	24.48	24.48	1687.25°	S62°24'00"W	24.89
C58	38.00	24.48	24.48	1717.25°	S12°24'00"E	24.89
C59	38.00	24.48	24.48	1747.25°	S62°24'00"E	24.89
C60	38.00	24.48	24.48	1777.25°	S12°24'00"W	24.89
C61	38.00	24.48	24.48	1807.25°	S62°24'00"W	24.89
C62	38.00	24.48	24.48	1837.25°	S12°24'00"E	24.89
C63	38.00	24.48	24.48	1867.25°	S62°24'00"E	24.89
C64	38.00	24.48	24.48	1897.25°	S12°24'00"W	24.89
C65	38.00	24.48	24.48	1927.25°	S62°24'00"W	24.89
C66	38.00	24.48	24.48	1957.25°	S12°24'00"E	24.89
C67	38.00	24.48	24.48	1987.25°	S62°24'00"E	24.89
C68	38.00	24.48	24.48	2017.25°	S12°24'00"W	24.89
C69	38.00	24.48	24.48	2047.25°	S62°24'00"W	24.89
C70	38.00	24.48	24.48	2077.25°	S12°24'00"E	24.89
C71	38.00	24.48	24.48	2107.25°	S62°24'00"E	24.89
C72	38.00	24.48	24.48	2137.25°	S12°24'00"W	24.89
C73	38.00	24.48	24.48	2167.25°	S62°24'00"W	24.89
C74	38.00	24.48	24.48	2197.25°	S12°24'00"E	24.89
C75	38.00	24.48	24.48	2227.25°	S62°24'00"E	24.89
C76	38.00	24.48	24.48	2257.25°	S12°24'00"W	24.89
C77	38.00	24.48	24.48	2287.25°	S62°24'00"W	24.89
C78	38.00	24.48	24.48	2317.25°	S12°24'00"E	24.89
C79	38.00	24.48	24.48	2347.25°	S62°24'00"E	24.89
C80	38.00	24.48	24.48	2377.25°	S12°24'00"W	24.89
C81	38.00	24.48	24.48	2407.25°	S62°24'00"W	24.89
C82	38.00	24.48	24.48	2437.25°	S12°24'00"E	24.89
C83	38.00	24.48	24.48	2467.25°	S62°24'00"E	24.89
C84	38.00	24.48	24.48	2497.25°	S12°24'00"W	24.89
C85	38.00	24.48	24.48	2527.25°	S62°24'00"W	24.89
C86	38.00	24.48	24.48	2557.25°	S12°24'00"E	24.89
C87	38.00	24.48	24.48	2587.25°	S62°24'00"E	24.89
C88	38.00	24.48	24.48	2617.25°	S12°24'00"W	24.89
C89	38.00	24.48	24.48	2647.25°	S62°24'00"W	24.89
C90	38.00	24.48	24.48	2677.25°	S12°24'00"E	24.89
C91	38.00	24.48	24.48	2707.25°	S62°24'00"E	24.89
C92	38.00	24.48	24.48	2737.25°	S12°24'00"W	24.89
C93	38.00	24.48	24.48	2767.25°	S62°24'00"W	24.89
C94	38.00	24.48	24.48	2797.25°	S12°24'00"E	24.89
C95	38.00	24.48	24.48	2827.25°	S62°24'00"E	24.89
C96	38.00	24.48	24.48	2857.25°	S12°24'00"W	24.89
C97	38.00	24.48	24.48	2887.25°	S62°24'00"W	24.89
C98	38.00	24.48	24.48	2917.25°	S12°24'00"E	24.89
C99	38.00	24.48	24.48	2947.25°	S62°24'00"E	24.89
C100	38.00	24.48	24.48	2977.25°	S12°24'00"W	24.89
C101	38.00	24.48	24.48	3007.25°	S62°24'00"W	24.89
C102	38.00	24.48	24.48	3037.25°	S12°24'00"E	24.89
C103	38.00	24.48	24.48	3067.25°	S62°24'00"E	24.89
C104	38.00	24.48	24.48	3097.25°	S12°24'00"W	24.89
C105	38.00	24.48	24.48	3127.25°	S62°24'00"W	24.89
C106	38.00	24.48	24.48	3157.25°	S12°24'00"E	24.89
C107	38.00	24.48	24.48	3187.25°	S62°24'00"E	24.89
C108	38.00	24.48	24.48	3217.25°	S12°24'00"W	24.89
C109	38.00	24.48	24.48	3247.25°	S62°24'00"W	24.89
C110	38.00	24.48	24.48	3277.25°	S12°24'00"E	24.89
C111	38.00	24.48	24.48	3307.25°	S62°24'00"E	24.89
C112	38.00	24.48	24.48	3337.25°	S12°24'00"W	24.89
C113	38.00	24.48	24.48	3367.25°	S62°24'00"W	24.89
C114	38.00	24.48	24.48	3397.25°	S12°24'00"E	24.89
C115	38.00	24.48	24.48	3427.25°	S62°24'00"E	24.89
C116	38.00	24.48	24.48	3457.25°	S12°24'00"W	24.89
C117	38.00	24.48	24.48	3487.25°	S62°24'00"W	24.89
C118	38.00	24.48	24.48	3517.25°	S12°24'00"E	24.89
C119	38.00	24.48	24.48	3547.25°	S62°24'00"E	24.89
C120	38.00	24.48	24.48	3577.25°	S12°24'00"W	24.89
C121	38.00	24.48	24.48	3607.25°	S62°24'00"W	24.89
C122	38.00	24.48	24.48	3637.25°	S12°24'00"E	24.89
C123	38.00	24.48	24.48	3667.25°	S62°24'00"E	24.89
C124	38.00	24.48	24.48	3697.25°	S12°24'00"W	24.89
C125	38.00	24.48	24.48	3727.25°	S62°24'00"W	24.89
C126	38.00	24.48	24.48	3757.25°	S12°24'00"E	24.89
C127	38.00	24.48	24.48	3787.25°	S62°24'00"E	24.89
C128	38.00	24.48	24.48	3817.25°	S12°24'00"W	24.89
C129	38.00	24.48	24.48	3847.25°	S62°24'00"W	24.89
C130	38.00	24.48	24.48	3877.25°	S12°24'00"E	24.89
C131	38.00	24.48	24.48	3907.25°	S62°24'00"E	24.89
C132	38.00	24.48	24.48	3937.25°	S12°24'00"W	24.89
C133	38.00	24.48	24.48	3967.25°	S62°24'00"W	24.89
C134	38.00	24.48	24.48	3997.25°	S12°24'00"E	24.89
C135	38.00	24.48	24.48	4027.25°	S62°24'00"E	24.89
C136	38.00	24.48	24.48	4057.25°	S12°24'00"W	24.89
C137	38.00	24.48	24.48	4087.25°	S62°24'00"W	24.89
C138	38.00	24.48	24.48	4117.25°	S12°24'00"E	24.89
C139	38.00	24.48	24.48	4147.25°	S62°24'00"E	24.89
C140	38.00	24.48	24.48	4177.25°	S12°24'00"W	24.89
C141	38.00	24.48	24.48	4207.25°	S62°24'00"W	24.89
C142	38.00	24.48	24.48	4237.25°	S12°24'00"E	24.89
C143	3					

# EAGLE RIDGE SUBDIVISION PHASE 2

## A Replat of Blocks 3 and 4 of Eagle Ridge Subdivision Phase 1 & 2 The SE1/4 OF Section 15, T.16 N., R.3 E., B.M., Valley County, Idaho

### CERTIFICATE OF OWNER

I, the undersigned, being the owner of the above described land, do hereby certify that the same is being replatted as shown on the attached plat, and that the same is being replatted in accordance with the provisions of the laws of the State of Idaho, and that the same is being replatted in accordance with the provisions of the laws of the State of Idaho, and that the same is being replatted in accordance with the provisions of the laws of the State of Idaho.

Block 3  
COMMENCEMENT at the E 1/4 corner common to said Section 15 and Section 22, as shown on the plat of said Eagle Ridge Subdivision, and along the north line of said Section 15.

- 1.) N. 69°11'43"W, 712.59 feet, thence, departing said section line
- 2.) N. 69°11'43"W, 682.15 feet to the POINT OF BEGINNING, thence,
- 3.) N. 50°37'24"E, 205.42 feet, thence,
- 4.) N. 1°07'15"W, 197.83 feet to a point on a non-tangent curve
- 5.) along the right-of-way for State Court and Eagle Lane,
- 6.) N. 17°50'50"E, 101.45 feet to the beginning of a tangent curve,
- 7.) Northwesterly along said curve to the right having a radius of 35.00 feet, an arc length of 28.25 feet, through a central angle of 47°30'46", and a chord bearing and distance of N. 68°51'01"W, 84.80 feet, thence,
- 8.) Northwesterly along said curve to the right having a radius of 115.00 feet, an arc length of 146.27 feet, through a central angle of 108°58'23", and a chord bearing and distance of N. 67°27'02"E, 162.74 feet, thence,
- 9.) S. 53°04'46"E, 101.00 feet, thence, from said curve,
- 10.) Southwesterly along said curve to the left having a radius of 35.00 feet, an arc length of 46.37 feet, through a central angle of 75°48'41", and a chord bearing and distance of S. 21°14'10"W, 58.25 feet, thence,
- 11.) Southwesterly along said curve to the left having a radius of 135.00 feet, an arc length of 60.89 feet, through a central angle of 102°23'20", and a chord bearing and distance of S. 17°30'57"W, 80.97 feet, thence, tangent from said curve,
- 12.) S. 69°11'43"W, 342.85 feet to the beginning of a tangent curve, thence,
- 13.) Southwesterly along said curve to the left having a radius of 365.00 feet, an arc length of 408.40 feet, through a central angle of 64°12'30", and a chord bearing and distance of S. 30°29'59"W, 308.27 feet, thence,
- 14.) Southwesterly along a curve to the left having a radius of 235.00 feet, an arc length of 286.00 feet, through a central angle of 20°29'45", and a chord bearing and distance of 19°10'58"W, 207.10 feet, thence,
- 15.) Southwesterly along a curve to the left having a radius of 35.00 feet, an arc length of 24.67 feet, through a central angle of 40°22'38", and a chord bearing and distance of S. 70°15'24"W, 31.58 feet, thence,
- 16.) N. 21°44'50"W, 315.00 feet to the POINT OF BEGINNING.

Block 3 CONTAINING 7.00 Acres, more or less.

Block 4  
COMMENCEMENT at the E 1/4 corner common to said Section 15 and Section 22, as shown on the plat of said Eagle Ridge Subdivision along the south line of said Section 15.

- 1.) N. 69°11'43"W, 602.00 feet, thence, departing said section line,
- 2.) N. 69°11'43"W, 622.00 feet to a point on a non-tangent curve, thence, along the
- 3.) Northwesterly along said curve to the left having a radius of 60.00 feet, an arc length of 89.22 feet, through a central angle of 85°46'12", and a chord bearing and distance of N. 68°21'30"E, 81.67 feet, thence,
- 4.) Northwesterly along a curve to the right having a radius of 35.00 feet, an arc length of 27.60 feet, through a central angle of 40°00'01", and a chord bearing and distance of N. 27°34'30"E, 28.79 feet, thence,
- 5.) Northwesterly along said curve to the right having a radius of 785.00 feet, an arc length of 148.07 feet, through a central angle of 20°10'26", and a chord bearing and distance of N. 60°37'11"E, 142.82 feet, thence,
- 6.) Northwesterly along said curve to the left having a radius of 435.00 feet, an arc length of 692.91 feet, through a central angle of 84°15'35", and a chord bearing and distance of N. 59°29'30"E, 462.74 feet, thence, tangent from said curve,
- 7.) S. 0°12'33"E, 678.26 feet to the POINT OF BEGINNING.

Block 4 CONTAINING 4.01 Acres, more or less.

Blocks 3 and 4, CONTAINING 11.01 Acres, more or less.

SUBJECT TO all Covenants, Rights-of-Way and Easements of Record.

BY:

Theodore G. Arnold Owner.

Jerry C. Wagner Owner.

Jerry L. Deckerd Owner.

### APPROVAL OF THE VALLEY COUNTY PLANNING AND ZONING COMMISSION

ACCEPTED AND APPROVED THIS \_\_\_\_\_ DAY OF \_\_\_\_\_, 2004, BY THE VALLEY COUNTY PLANNING AND ZONING COMMISSION.

CHAIRMAN

### ACKNOWLEDGMENT

STATE OF IDAHO } S.S.  
COUNTY OF \_\_\_\_\_ }

ON THIS \_\_\_\_\_ DAY OF \_\_\_\_\_, 2004, BEFORE ME, THE UNDERSIGNED, A NOTARY PUBLIC IN AND FOR SAID STATE, PERSONALLY APPEARED THEODORE G. ARNOLD, KNOWN TO ME TO BE THE PERSONS WHO EXECUTED THE WITHIN INSTRUMENT AND ACKNOWLEDGED TO ME THAT THEY EXECUTED THE SAME. IN WITNESS WHEREOF, I HAVE HEREUNTO SET MY HAND AND AFFIXED MY OFFICIAL SEAL THE DAY AND YEAR IN THIS CERTIFICATE FIRST ABOVE WRITTEN.

MY COMMISSION EXPIRES \_\_\_\_\_

NOTARY PUBLIC FOR THE STATE OF IDAHO  
RESIDING AT \_\_\_\_\_

### ACKNOWLEDGMENT

STATE OF IDAHO } S.S.  
COUNTY OF \_\_\_\_\_ }

ON THIS \_\_\_\_\_ DAY OF \_\_\_\_\_, 2004, BEFORE ME, THE UNDERSIGNED, A NOTARY PUBLIC IN AND FOR SAID STATE, PERSONALLY APPEARED JERRY C. WAGNER, KNOWN TO ME TO BE THE PERSONS WHO EXECUTED THE WITHIN INSTRUMENT AND ACKNOWLEDGED TO ME THAT THEY EXECUTED THE SAME. IN WITNESS WHEREOF, I HAVE HEREUNTO SET MY HAND AND AFFIXED MY OFFICIAL SEAL THE DAY AND YEAR IN THIS CERTIFICATE FIRST ABOVE WRITTEN.

MY COMMISSION EXPIRES \_\_\_\_\_

NOTARY PUBLIC FOR THE STATE OF IDAHO  
RESIDING AT \_\_\_\_\_

### ACKNOWLEDGMENT

STATE OF IDAHO } S.S.  
COUNTY OF \_\_\_\_\_ }

ON THIS \_\_\_\_\_ DAY OF \_\_\_\_\_, 2004, BEFORE ME, THE UNDERSIGNED, A NOTARY PUBLIC IN AND FOR SAID STATE, PERSONALLY APPEARED JERRY L. DECKERD, KNOWN TO ME TO BE THE PERSONS WHO EXECUTED THE WITHIN INSTRUMENT AND ACKNOWLEDGED TO ME THAT THEY EXECUTED THE SAME. IN WITNESS WHEREOF, I HAVE HEREUNTO SET MY HAND AND AFFIXED MY OFFICIAL SEAL THE DAY AND YEAR IN THIS CERTIFICATE FIRST ABOVE WRITTEN.

MY COMMISSION EXPIRES \_\_\_\_\_

NOTARY PUBLIC FOR THE STATE OF IDAHO  
RESIDING AT \_\_\_\_\_

### APPROVAL OF THE BOARD OF VALLEY COUNTY COMMISSIONERS

ACCEPTED AND APPROVED THIS \_\_\_\_\_ DAY OF \_\_\_\_\_, 2004, BY THE BOARD OF COUNTY COMMISSIONERS OF VALLEY COUNTY, IDAHO.

CHAIRMAN

### CERTIFICATE OF COUNTY SURVEYOR

I, JOHN RUSSELL, REGISTERED PROFESSIONAL LAND SURVEYOR FOR VALLEY COUNTY, IDAHO, DO HEREBY CERTIFY THAT I HAVE CHECKED THIS PLAT AND THAT IT COMPLIES WITH THE STATE OF IDAHO CODE RELATING TO PLATS AND SURVEYS.

VALLEY COUNTY SURVEYOR

### CERTIFICATE OF SURVEYOR

I, RALPH MILLER, DO HEREBY CERTIFY THAT I AM A PROFESSIONAL LAND SURVEYOR IN THE STATE OF IDAHO, AND THAT THIS PLAT AS DESCRIBED IN THE "CERTIFICATE OF OWNERS" WAS DRAWN FROM THE FIELD NOTES OF A SURVEY MADE ON THE GROUND UNDER MY DIRECT SUPERVISION AND ACCURATELY REPRESENTS THE POINTS PLATTED HEREON, AND IS IN CONFORMITY WITH THE STATE OF IDAHO CODE RELATING TO PLATS AND SURVEYS.

RALPH MILLER  
IDAHO NO. 6577



### CERTIFICATE OF COUNTY TREASURER

I, THE UNDERSIGNED, COUNTY TREASURER IN AND FOR THE COUNTY OF VALLEY, STATE OF IDAHO, PER THE REQUIREMENTS OF I.C. § 15-1506, DO HEREBY CERTIFY THAT ANY AND ALL CURRENT AND/OR DELINQUENT COUNTY PROPERTY TAXES FOR THE PROPERTY INCLUDED IN THIS SUBDIVISION HAVE BEEN PAID IN FULL. THIS CERTIFICATION IS VALID FOR THE NEXT THIRTY (30) DAYS ONLY.

DATE \_\_\_\_\_

COUNTY TREASURER

**SURESH ENGINEERING, INC.**  
McCall, Idaho