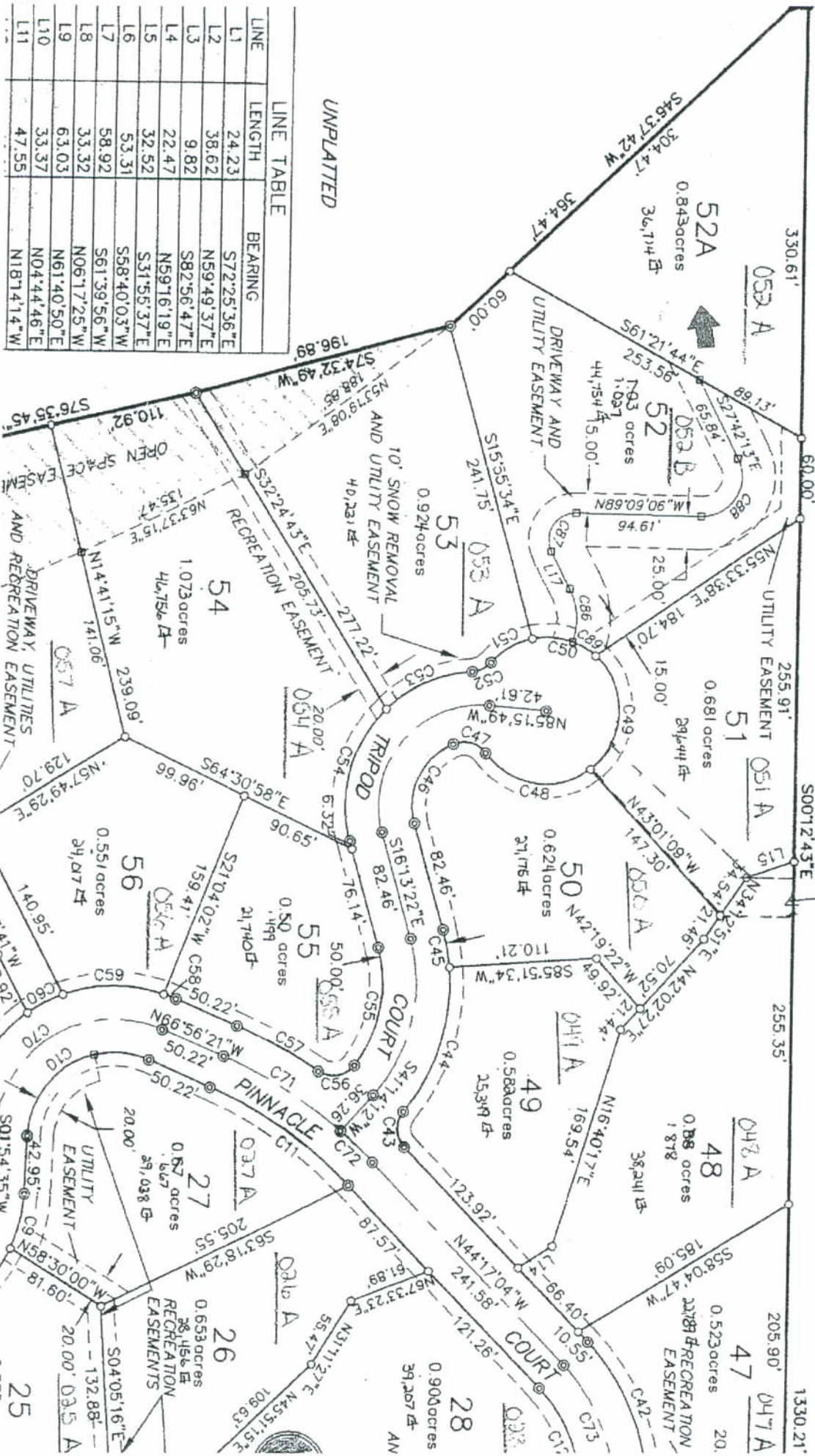


# A Replat of Portions of Blocks 16 and 13, Tamara Located in Sectic Amelville

NOTE: Any map or sketch enclosed as an attachment herewith is furnished for information purposes only to assist in property location with reference to streets and other parcels. No representation is made as to accuracy and the company assumes no liability for any loss occurring by reason of reliance thereon.



UNPLATTED

LINE	LENGTH	BEARING
L1	24.23	S72°25'36"E
L2	38.62	N59°49'37"E
L3	9.82	S82°56'47"E
L4	22.47	N59°16'19"E
L5	32.52	S31°55'37"E
L6	53.31	S58°40'03"W
L7	58.92	S61°39'56"W
L8	33.32	N06°17'25"W
L9	63.03	N61°40'50"E
L10	33.37	N04°44'46"E
L11	47.55	N18°14'14"W