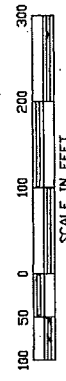
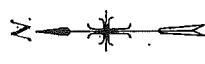


2007033047

RECORDED

2007 MAY 14 PM 4 44
WILLIAM H. BURST
CANYON COUNTY RECORDER
BY *[Signature]*



LEGEND

- Boundary Line
- Centerline
- Easement line
- Existing Fence
- Sectionline
- Top of Canal Bank
- Found Brass Cap
- Found Aluminum Cap
- Set 1/2" x 24" Iron Pin w/Cap
- Set 3/8" x 30" Iron Pin w/Cap
- Set PK Nail
- Found 1/2" Iron Pin
- Found 5/8" Iron Pin
- Calculated Point
- Witness Corner
- Meta of Record

CERTIFICATE OF SURVEYOR

I, John T. Eddy, do hereby certify that I am a registered Land Surveyor, licensed by the State of Idaho, and that this map has been prepared from an actual survey made on the ground under my supervision, and that this map is an accurate representation of said survey, and is in conformity with the Corner Prolongation and Filing Act, Idaho Code 55-1601 THROUGH 55-1612 and to the Idaho Code relating to Surveys.



John T. Eddy, P.L.S.

License No. 972

RECORDING INDEX NO. 324-9-3-0-00-00

PROPERTY BOUNDARY ADJUSTMENT

BILLY AND KAREN CUNNINGTON

A PORTION OF THE N 1/4 OF THE SW 1/4, SW 1/4, SECTION 9, T.3N., R.2W., B.M. CANYON COUNTY, IDAHO.

E- LAND SURVEYING
5650 N. Star Road
Meridian, Idaho 83645
(208) 266-7531

ACAD DWG. FILE: B-CUNNINGTON2.DWG

DWG. NO. DR. RLG CH. JTE SHEET 2 OF 2

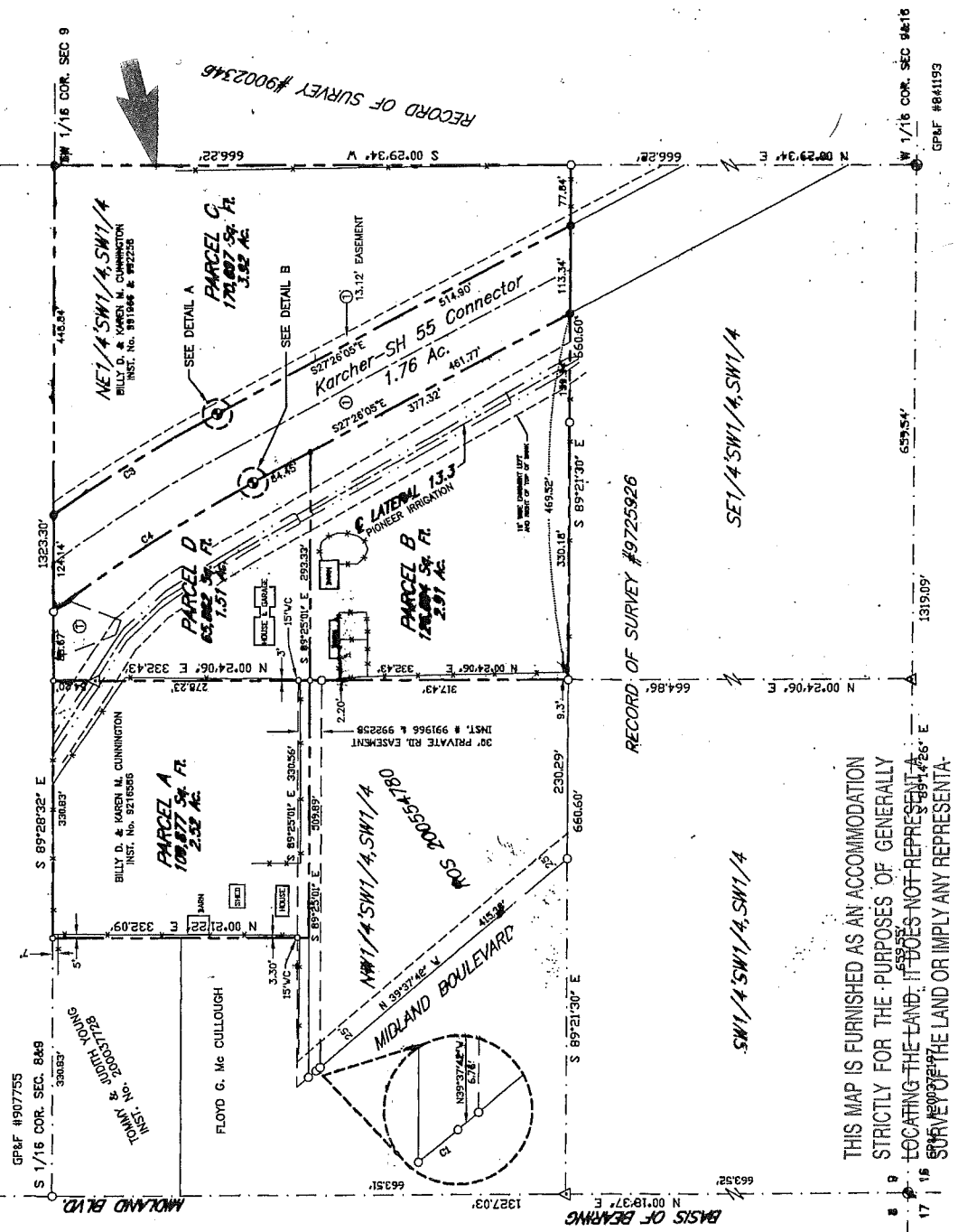
DATE: APRIL 28, 2007 DWG. NO. 042807

SCALE: 1" = 100'

CURVE TABLE

CURVE	BELTA ANGLE	LENGTH	RADIUS	TAN. LENGTH	CH. BEARING	CH. LENGTH
CI	1°16'17"	12.75'	575.46'	6.38'	N38°59'34" W	12.73'
C3	7°16'54"	248.19'	1952.88'	12.427'	N31°04'33" W	248.03'
C4	9°29'50"	307.13'	1852.88'	15.932'	N32°11'01" W	306.78'

NOTE:
① INSTRUMENT NO. 200690495 TO THE STATE OF IDAHO FOR
Project No. IN-NH-RR-84-1 (013) 33



THIS MAP IS FURNISHED AS AN ACCOMMODATION STRICTLY FOR THE PURPOSES OF GENERALLY LOCATING THE LAND. IT DOES NOT REPRESENT A SURVEY OF THE LAND OR IMPLY ANY REPRESENTATIONS AS TO THE SIZE, AREA OR ANY OTHER FACTS RELATED TO THE LAND SHOWN HEREON.

