



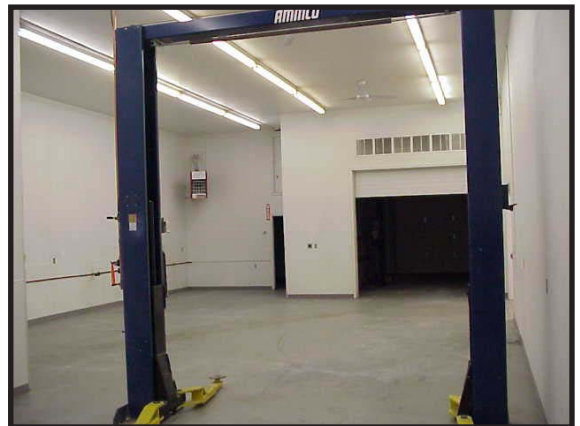
# Auction at Coeur d'Alene Resort

## Order of Auction

- ◆ 115 & 119 East Third Avenue, Post Falls - Absolute
- ◆ 6360 N. Sunshine Street, Coeur d'Alene (Former Funtastics Bldg.) - Absolute
- ◆ 265 W. Sunburst Avenue, Coeur d'Alene- Absolute
- ◆ 6788 S. Main Street, Bonners Ferry - Absolute
- ◆ 7685 W. Bard Street, Rathdrum - Absolute
- ◆ Tract 6, Crestview Addition, Plummer - Absolute

## 115 & 119 East Third Avenue, Post Falls, Idaho

**Property Details:** Two commercial buildings on 0.418 acres (18,080 SF). 2,400 SF shop built in 1973. 9,200 SF display and shop building built in 2005. Office, show room and nicely remodeled kitchen. 2009 Property Taxes: \$6,676.00  
**Absolute - No Minimum, No Reserve**



**Terms:** 5% Buyers premium added to final live bid price to arrive at total purchase price. \$15,000 due as the nonrefundable deposit on auction day (personal checks accepted). Balance due within 30 days at closing. Properties are sold with no contingencies. Please inspect and conduct all due diligence prior to auction. Corbett Bottles Real Estate Marketing LLC, represent the Seller only. Broker/Agent participation invited. BUYER AND BUYER'S AGENTS TO VERIFY ALL INFO. PROPERTY SOLD "AS-IS".

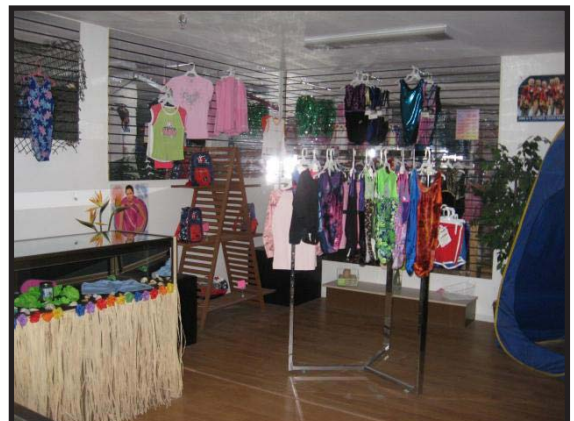
[www.CorbettBottles.com](http://www.CorbettBottles.com)

208.377.5700

## 6360 N. Sunshine Street, Coeur d'Alene, Idaho

**Property Details:** 12,000 SF Warehouse building on 1.33 acres. Building has approximately 9,000 SF of open space and 3,000 SF office space. Built in 1997. Located behind Applebee's Restaurant near Silver Lake Mall. 2009 Property Taxes: \$6,719.00

**Absolute - No Minimum, No Reserve**



**Terms:** 5% Buyers premium added to final live bid price to arrive at total purchase price. \$15,000 due as the nonrefundable deposit on auction day (personal checks accepted). Balance due within 30 days at closing. Properties are sold with no contingencies. Please inspect and conduct all due diligence prior to auction. Corbett Bottles Real Estate Marketing LLC, represent the Seller only. Broker/Agent participation invited. BUYER AND BUYER'S AGENTS TO VERIFY ALL INFO. PROPERTY SOLD "AS-IS".

[www.CorbettBottles.com](http://www.CorbettBottles.com)

208.377.5700

## 265 W. Sunburst Avenue, Coeur d'Alene, Idaho

**Property Details:** 2,328 SF Building on 0.23 acre. Former residence converted to a daycare location. Built in 1987. Located directly behind Applebee's Restaurant near Silver Lake Mall. This property is contiguous to 6360 N. Sunshine Street. 2009 Property Taxes: \$3,080.00  
**Absolute - No Minimum, No Reserve**



**Terms:** 5% Buyers premium added to final live bid price to arrive at total purchase price. \$15,000 due as the nonrefundable deposit on auction day (personal checks accepted). Balance due within 30 days at closing. Properties are sold with no contingencies. Please inspect and conduct all due diligence prior to auction. Corbett Bottles Real Estate Marketing LLC, represent the Seller only. Broker/Agent participation invited. BUYER AND BUYER'S AGENTS TO VERIFY ALL INFO. PROPERTY SOLD "AS-IS".

[www.CorbettBottles.com](http://www.CorbettBottles.com)

208.377.5700

## 6788 S. Main Street, Bonners Ferry, Idaho

Property Details: 2,744 SF Building on 0.349 acre. Former retail store next to Les Schwab.  
Highway 95 frontage. 2009 Property Taxes: \$2,291.00  
Absolute - No Minimum, No Reserve



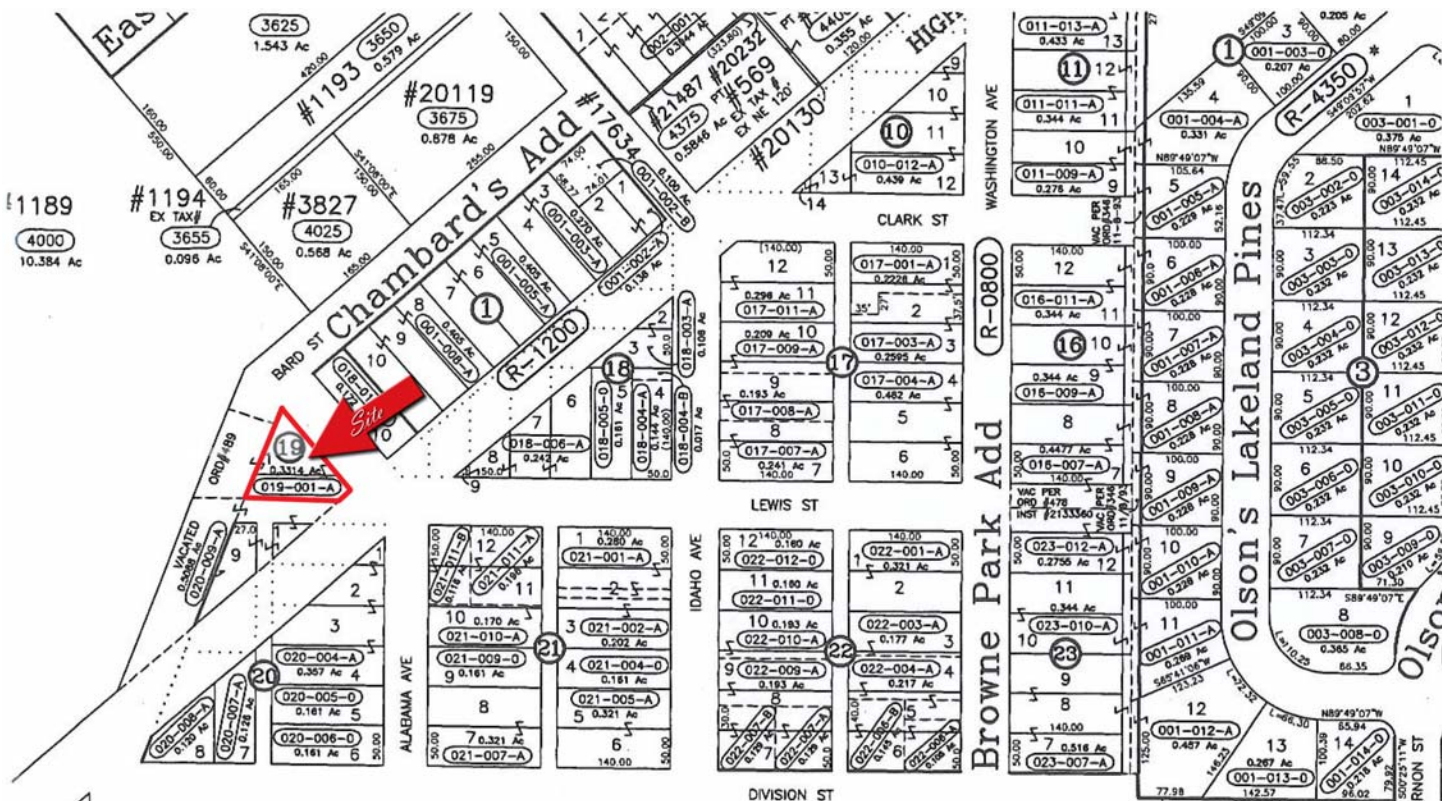
**Terms:** 5% Buyers premium added to final live bid price to arrive at total purchase price. \$15,000 per lot due as the nonrefundable deposit on auction day (personal checks accepted). Balance due within 30 days at closing. Properties are sold with no contingencies. Please inspect and conduct all due diligence prior to auction. Corbett Bottles Real Estate Marketing LLC, represent the Seller only. Broker/Agent participation invited. BUYER AND BUYER'S AGENTS TO VERIFY ALL INFO. PROPERTY SOLD "AS-IS".

[www.CorbettBottles.com](http://www.CorbettBottles.com)

208.377.5700

# 7685 W. Bard Street, Rathdrum, Idaho

**Property Details:** 14,436 SF Bare commercial ground. Located at the intersection of Bard Street and Highway 44. 2009 Property Taxes: \$964.00  
**Absolute - No Minimum, No Reserve**



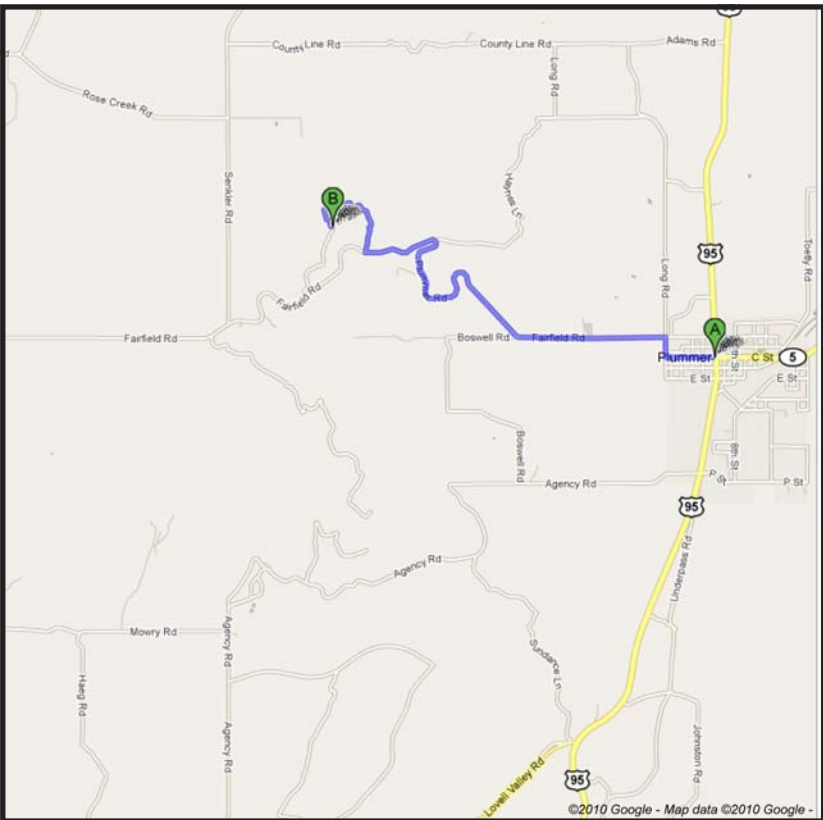
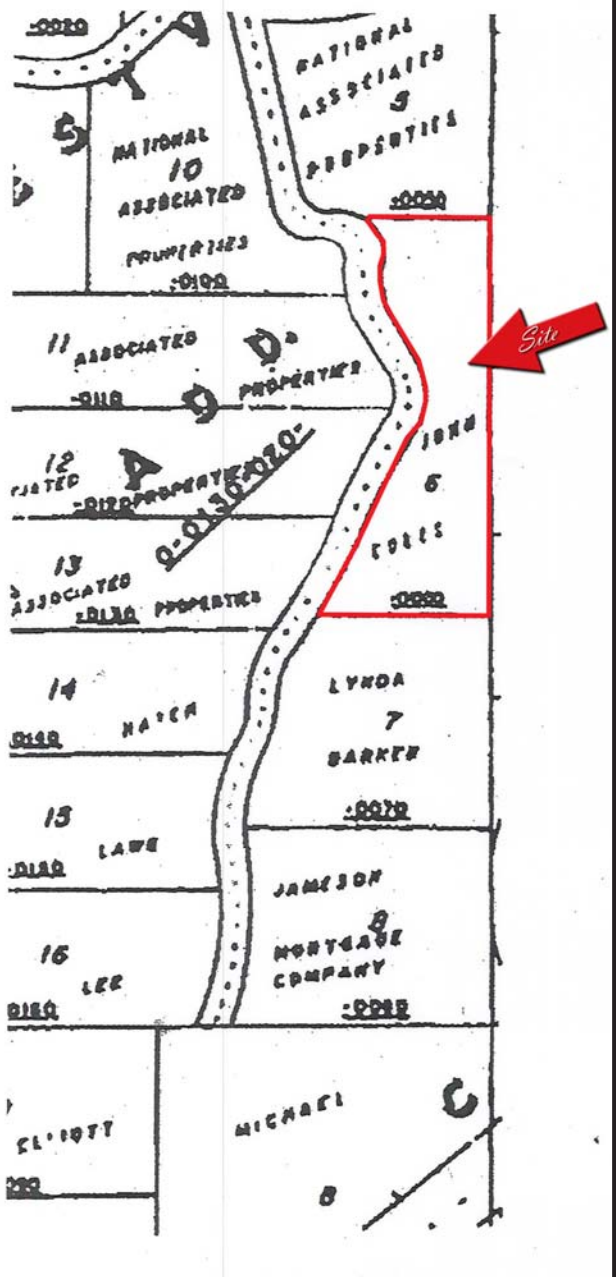
**Terms:** 5% Buyers premium added to final live bid price to arrive at total purchase price. \$15,000 per lot due as the nonrefundable deposit on auction day (personal checks accepted). Balance due within 30 days at closing. Properties are sold with no contingencies. Please inspect and conduct all due diligence prior to auction. Corbett Bottles Real Estate Marketing LLC, represent the Seller only. Broker/Agent participation invited. BUYER AND BUYER'S AGENTS TO VERIFY ALL INFO. PROPERTY SOLD "AS-IS".

[www.CorbettBottles.com](http://www.CorbettBottles.com)

208.377.5700

# Tract 6, Crestview First Addition, Plummer, Idaho

**Property Details:** 5 Acres bare recreational land. Rolling topography. Standing timber, seasonal access via private single lane road. 2009 Property Taxes: \$176.00  
**Absolute - No Minimum, No Reserve**



**Terms:** 5% Buyers premium added to final live bid price to arrive at total purchase price. \$15,000 per lot due as the nonrefundable deposit on auction day (personal checks accepted). Balance due within 30 days at closing. Properties are sold with no contingencies. Please inspect and conduct all due diligence prior to auction. Corbett Bottles Real Estate Marketing LLC, represent the Seller only. Broker/Agent participation invited. BUYER AND BUYER'S AGENTS TO VERIFY ALL INFO. PROPERTY SOLD "AS-IS".

[www.CorbettBottles.com](http://www.CorbettBottles.com)

208.377.5700