



# Castlebury West Auction

## Order of Auction

- ◆ Phase 3 +/- 22.3 Acres - Absolute
- ◆ 28 Residential Building Lots - 5 Absolute, Your Choice
- ◆ 4 Business Park Lots - 2 Absolute, Your Choice

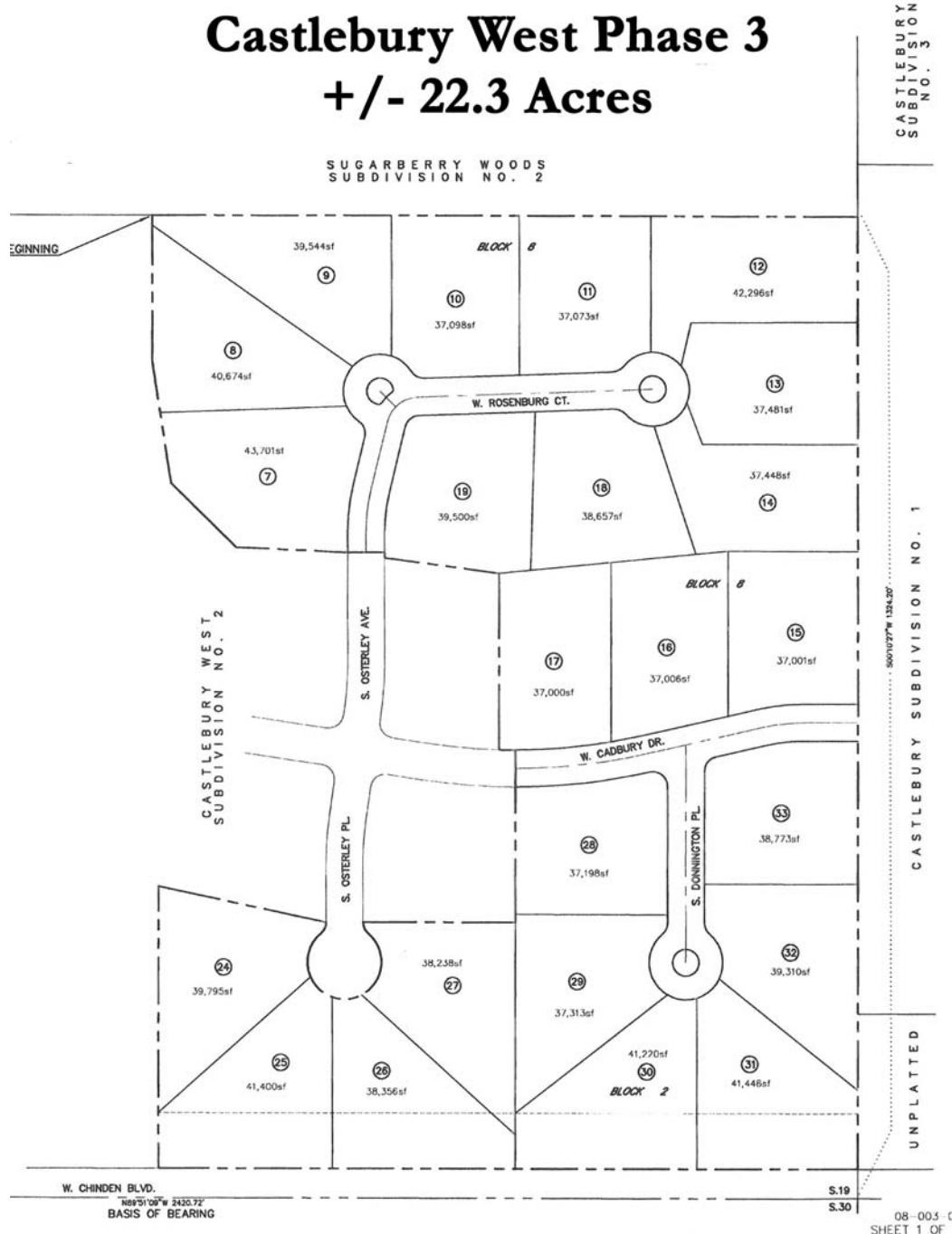
# Castlebury West - Phase 3 (+/- 22.3 Acres)

## Eagle, Idaho

2009 Property Taxes: \$3,953.00

Absolute - No Minimum, No Reserve

### Castlebury West Phase 3 +/- 22.3 Acres



**Terms:** 5% Buyers premium added to final live bid price to arrive at total purchase price. \$25,000 due as the nonrefundable deposit on auction day (personal checks accepted). Balance due within 30 days at closing. Properties are sold with no contingencies. Please inspect and conduct all due diligence prior to auction. Corbett Bottles Real Estate Marketing LLC, represent the Seller only. Broker/Agent participation invited. BUYER AND BUYER'S AGENTS TO VERIFY ALL INFO. PROPERTY SOLD "AS-IS".



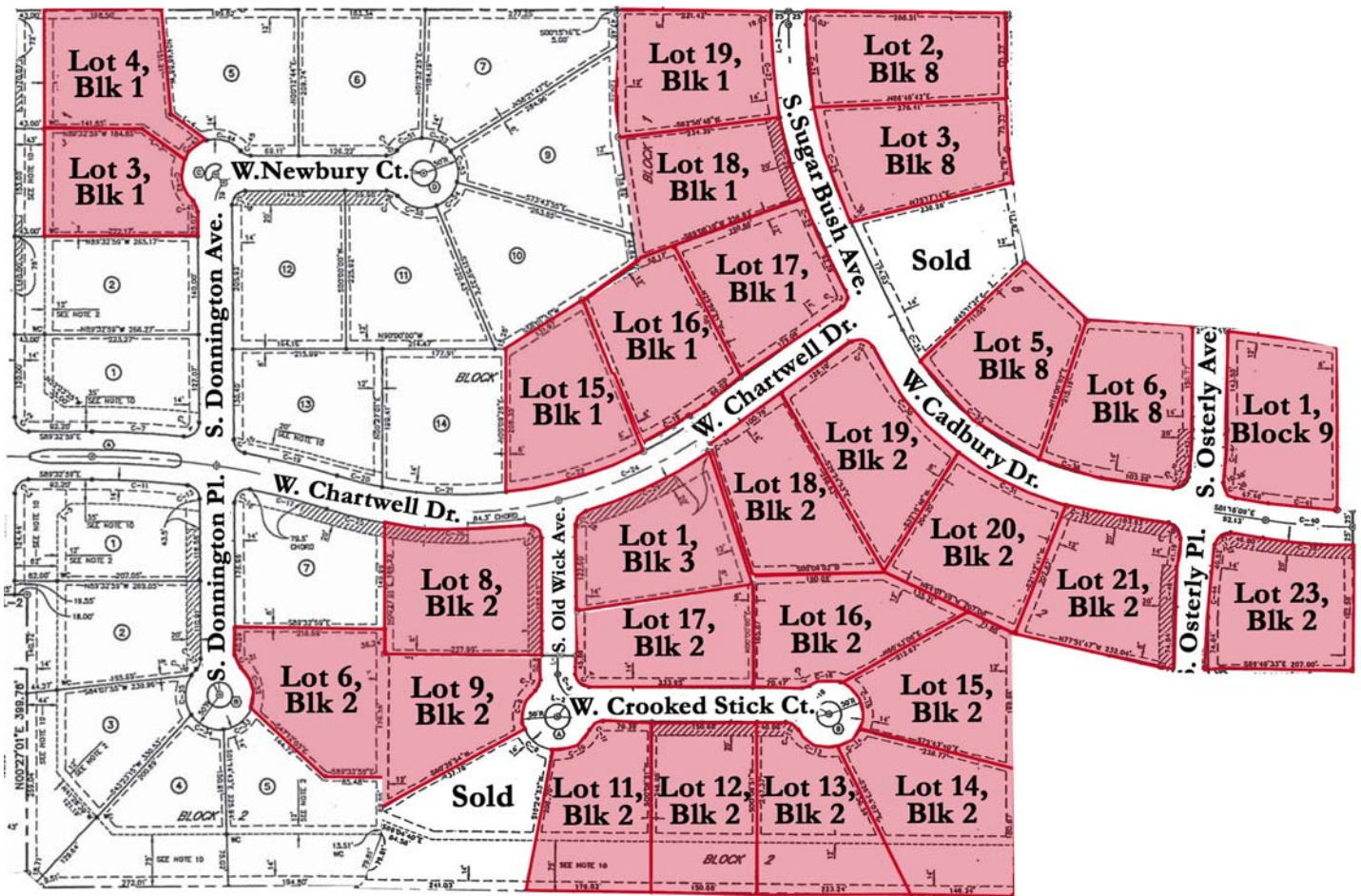
[www.CorbettBottles.com](http://www.CorbettBottles.com)

208.377.5700

# Castlebury West Residential Lots Eagle, Idaho

5 Absolute - No Minimum, No Reserve, You Choose the Lots

## Castlebury West Residential Lots



**Terms:** 5% Buyers premium added to final live bid price to arrive at total purchase price. \$10,000 per property due as the nonrefundable deposit on auction day (personal checks accepted). Balance due within 30 days at closing. Properties are sold with no contingencies. Please inspect and conduct all due diligence prior to auction. Corbett Bottles Real Estate Marketing LLC, represent the Seller only. Broker/Agent participation invited. BUYER AND BUYER'S AGENTS TO VERIFY ALL INFO. PROPERTY SOLD "AS-IS".

[www.CorbettBottles.com](http://www.CorbettBottles.com)

208.377.5700

Castlebury West Residential Lot Auction Details

Auction Date 4/15/2010

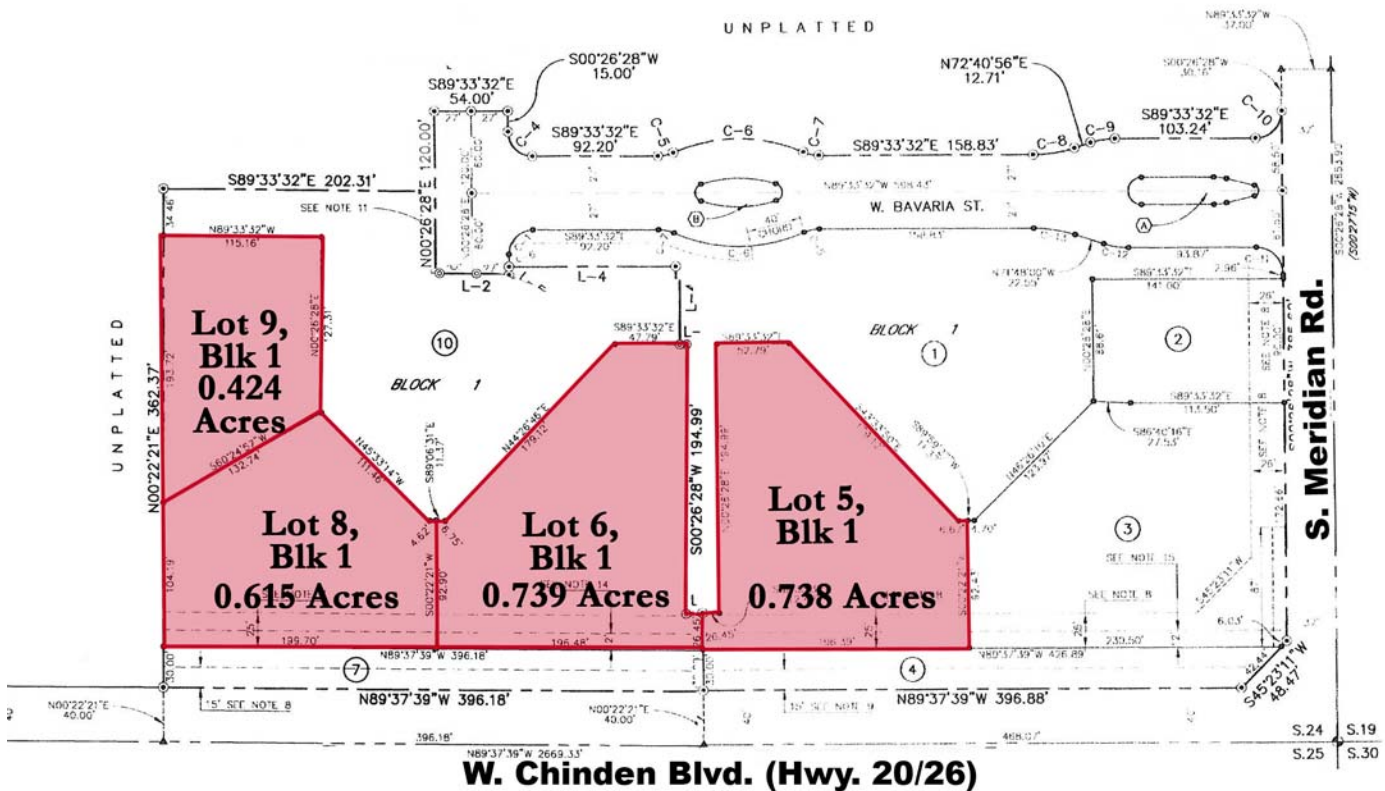
Phase	Lot	Block	Address	acreage	Notes
1	3	1	3165 Donnington Ave.	0.853	
1	4	1	3132 Donnington Ave.	0.912	
1	15	1	2940 Chartwell Dr.	0.849	
1	6	2	3418 Donnington Pl.	0.851	
1	8	2	2987 Chartwell Dr.	0.943	
1	1	3	2893 Chartwell Dr.	0.872	
2	16	1	2878 Chartwell Dr.	0.849	
2	17	1	2824 Chartwell Dr.	0.849	
2	18	1	3167 Sugarbush Ave.	0.851	
2	19	1	3125 Sugarbush Ave.	0.867	
2	9	2	3401 S. Old Wick Ave.	0.923	
2	11	2	2917 Crooked Stick Ct.	0.849	
2	12	2	2865 Crooked Stick Ct.	0.855	
2	13	2	2811 Crooked Stick Ct.	0.878	
2	14	2	2769 Crooked Stick Ct.	0.962	
2	15	2	2754 Crooked Stick Ct.	0.855	
2	16	2	2808 Crooked Stick Ct.	0.865	
2	17	2	2872 Crooked Stick Ct.	0.858	
2	18	2	2849 Chartwell Dr.	0.852	
2	19	2	2817 Chartwell Dr.	0.941	
2	20	2	2753 Cadbury Dr.	0.853	
2	21	2	2685 Cadbury Dr.	0.913	
2	23	2	3362 Osterley Ave	0.887	
2	2	8	3134 Sugar Bush Ave.	0.850	
2	3	8	3170 Sugar Bush Ave.	0.891	
2	5	8	2766 Cadbury Dr.	0.862	
2	6	8	2694 Cadbury Dr.	0.982	
2	1	9	3274 Osterley Ave	0.869	

# Castlebury West Business Park Lots Eagle, Idaho

2 Absolute - No Minimum, No Reserve, You Choose the Lots

## CASTLEBURY WEST BUSINESS PARK

<b>Lot 5, Blk 1 - 3225 W. Bavaria Street</b>	<b>Bldg. Pad</b>
<b>Lot 6, Blk 1 - 3357 W. Bavaria Street</b>	<b>7,700 Sq.Ft.</b>
<b>Lot 8, Blk 1 - 3405 W. Bavaria Street</b>	<b>7,700 Sq.Ft.</b>
<b>Lot 9, Blk 1 - 3443 W. Bavaria Street</b>	<b>7,000 Sq.Ft.</b>
	<b>8,400 Sq.Ft.</b>



**Terms:** 5% Buyers premium added to final live bid price to arrive at total purchase price. \$10,000 per property due as the nonrefundable deposit on auction day (personal checks accepted). Balance due within 30 days at closing. Properties are sold with no contingencies. Please inspect and conduct all due diligence prior to auction. Corbett Bottles Real Estate Marketing LLC, represent the Seller only. Broker/Agent participation invited. BUYER AND BUYER'S AGENTS TO VERIFY ALL INFO. PROPERTY SOLD "AS-IS".



REAL ESTATE AUCTIONS

[www.CorbettBottles.com](http://www.CorbettBottles.com)

208.377.5700