

## Ada County Parcel Information



**Matt Caba**  
 Customer Service  
 5660 E Franklin Rd. Suite 101  
 Nampa, Idaho 83687  
 phone: 208-475-1135  
 fax: 866-376-3736  
 www.titleonecorp.com

**Parcel ID #** S0519346760

**Property Address:** 640 E CHINDEN BLVD

**Property Type:** Agriculture

**Owner Information:**

**Owner Name:** Castlebury Investments LLC

**Second Owner:**

**Mail Address:** 6200 N Meeker Pl  
Boise, ID 83713-0000

**Assessor Information**

**Legal Description:** PAR #6760 OF SE4SW4 SEC 19 4N 1E #346750-B

**Subdivision:** 4N 1E 19

**Lot/Block:** /

**Section:** 19

**Acres:** 22.7970

**Tax Code Area:** 05-73

**Levy Rate 2008:** 0.009156439

**Levy Rate 2009:** 0.010059525

**% Levy Rate Change:** 8.92 %

**Zoning:** City of Eagle-R-1

**Homeowner Exemption:**

**Treasurer Information**

**Year:** 2008      **Tax:** \$5,614

**Year:** 2009      **Tax:** \$3,953

**Assessor Categories**

Year	Cat.	Description	Acres	Value
2009	100	HOMESITE ON AG	7.64	\$330,000
2009	310	RES IMPROVEMENT	0	\$37,500
2009	10	IRRIGATED AG	17	\$25,500
<b>Totals:</b>			24.64	\$393,000

**Land Information**

<b>Residential Acres:</b> 7.64	<b>Commercial Acres:</b> 0	<b>Other Acres:</b> 0	<b>Street:</b>	<b>Utilities:</b>
<b>Water Source:</b>	<b>Sewer:</b>	<b>Sidewalks:</b> N	<b>Curbs and Gutters:</b> N	<b>Topography:</b>
<b>View:</b>	<b>Water Influence:</b>	<b>Water Frontage:</b> 0	<b>Corner:</b> N	

**Residential Characteristics**

<b>Main Floor:</b> 956	<b>Deck Sq. Ft.:</b> 0	<b>Bedrooms:</b> 6	<b>Fireplace:</b> 0
<b>Lower Floor:</b> 0	<b>Lower Floor Unfin.:</b> 0	<b>Bathrooms:</b> 1	<b>Car Storage Sq. Ft.:</b> 0
<b>Upper Floor:</b> 0	<b>Patio Sq. Ft.:</b> 0	<b>Patio Covered.:</b> N	<b>Pool Sq. Ft.:</b> 0
<b>Attic:</b> 0	<b>Attic Unfin.:</b> 468	<b>Year Built:</b> 1920	<b>Porch Sq. Ft.:</b> 460
<b>Basement:</b> 0	<b>Basement Unfin.:</b> 0	<b>Year Remodeled:</b> 0	<b>Heating:</b> Y
<b>Total Sq. Ft.:</b> 1424	<b>Total Unfinished:</b> 468		<b>AC:</b> N



Main Menu

- [Home](#)
- [Assessor Main Page](#)
- [Help Index](#)
- [FAQ](#)
- [About Us](#)
- [Contact Us](#)
- [Disclaimer](#)

Property Search

- [Search by Parcel](#)
- [Search by Address](#)
- [Search by Subdivision](#)
- [Online Documents](#)

**Interactive Map**

## Land Characteristics for Parcel S0519346760

[Back to Parcel Search](#)

Residential Acres: 7.64  
 Commercial Acres: 0.0  
 Other Acres Acres: 0.0  
 Street: Not Available  
 Utility: Not Available  
 Water Source: Not Available  
 Sewer: Not Available  
 SideWalks: N  
 Curb-Gutters: N  
 Topography: Not Available  
 View: Not Available  
 Water Influence: Not Available  
 Water Frontage Feet: 0  
 Corner: N

**Property Details for Parcel S0519346760 and Year 2009**

[Back to Parcel Search](#)

Parcel: S0519346760  
 Year: 2009  
 Zone Code: RUT  
 Total Acres: 24.64  
 Tax Code Area: 05-73  
 Property Description:  
 PAR #6760 OF SE4SW4  
 SEC 19 4N 1E  
 #346750-B



Address: 640 E CHINDEN BLVD EAGLE , ID 83616  
 Subdivision: 4N 1E 19  
 Land Group Type: SECT  
 Township/Range/Section: 4N1E19

**Valuation Details**

Role	SCC	Acreage	Assessed Value	Valuation Method	Code Area
Primary	100 HOMESITE ON AG	7.64	\$330,000	MARKET	05-73
Primary	10 IRRIGATED AG	17.0	\$25,500	INCOME	05-73
Primary	310 RES IMPROVEMENT	0.0	\$37,500	COST	05-73

**Valuation History**

Year Value  
 2009 \$393,000  
 2008 \$613,100

**Tax Districts**

Tax District	Levy	Description	Phone
1	0.002634391	ADA COUNTY	208-287-7000
3	0.0001273	EMERGENCY MEDICAL	208-287-2950
6	0.001023202	ADA COUNTY HIGHWAY DIST	208-387-6120
8	0.003514248	SCHOOL DISTRICT NO. 2	208-855-4500
15	0.001001407	EAGLE CITY	208-939-6813
27	0.001463759	EAGLE FIRE	208-939-6463
35	0.000049134	EAGLE SEWER	208-939-0132
43	0.000029491	MOSQUITO ABATEMENT	208-577-4646
46	0.000083336	WESTERN ADA RECREATION	208-887-1730
100	0.000133257	COLLEGE OF WESTERN IDAHO	208-562-2113

Total Levy: 0.010059524999999998

**Taxes, Certifications, and Fees**

Year	Total Taxes	Taxes Paid	Taxes Due	Delinquent	Tax Data Current as of
2009	\$4,047.96	\$0.00	\$4,047.96	Yes	03/24/2010
2008	\$6,569.42	\$0.00	\$6,569.42	Yes	03/24/2010

**Characteristics**

[Land](#)  
[Residential](#)



Main Menu

- [Home](#)
- [Assessor Main Page](#)
- [Help Index](#)
- [FAQ](#)
- [About Us](#)
- [Contact Us](#)
- [Disclaimer](#)

Property Search

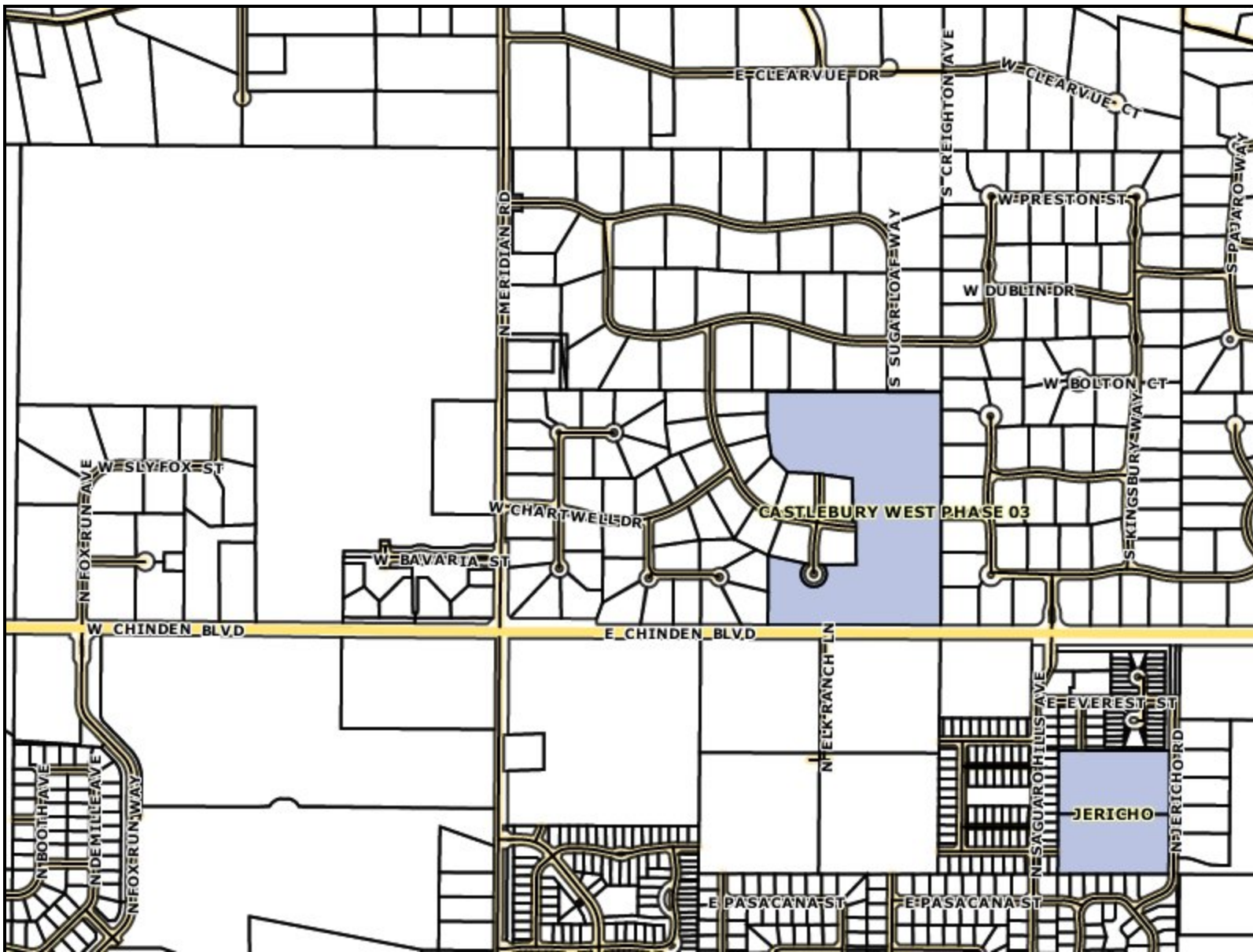
- [Search by Parcel](#)
- [Search by Address](#)
- [Search by Subdivision](#)
- [Online Documents](#)

[Interactive Map](#)

## Residential Characteristics for Parcel S0519346760

[Back to Parcel Search](#)

Year Built:	1920
Year Remodel:	0
Number of Bedrooms:	6
Number of Bathrooms:	1.0
Number of FirePlaces:	0
Air Conditioning:	N
Car Storage Sq Ft #1:	0
Car Storage Sq Ft #2:	0
General Purpose Building Sq Ft:	0
Porch Sq Ft:	460
Deck Sq Ft:	0
Deck Covered:	N
Patio Sq Ft:	0
Patio Covered:	N
Pool Sq Ft:	0
Total Sq Ft:	1424
Main Floor Sq Ft:	956
Upper Floor Sq Ft:	0
Finished Lower Floor Sq Ft:	0
Unfinished Lower Floor Sq Ft:	0
Finished Basement Floor Sq Ft:	0
Unfinished Basement Floor Sq Ft:	0
Finished Attic Sq Ft:	0
Unfinished Attic Sq Ft:	468



**Matt Caba**  
**Customer Service**  
**5660 E Franklin Rd. Suite 101**  
**Nampa, Idaho 83687**  
**phone: 208-475-1135**  
**fax: 866-376-3736**  
**www.titleonecorp.com**

Sentry Dynamics, Inc. and its  
 customers make no representations,  
 warranties or conditions, express or  
 implied, as to the accuracy or  
 completeness of information contained  
 in this report.

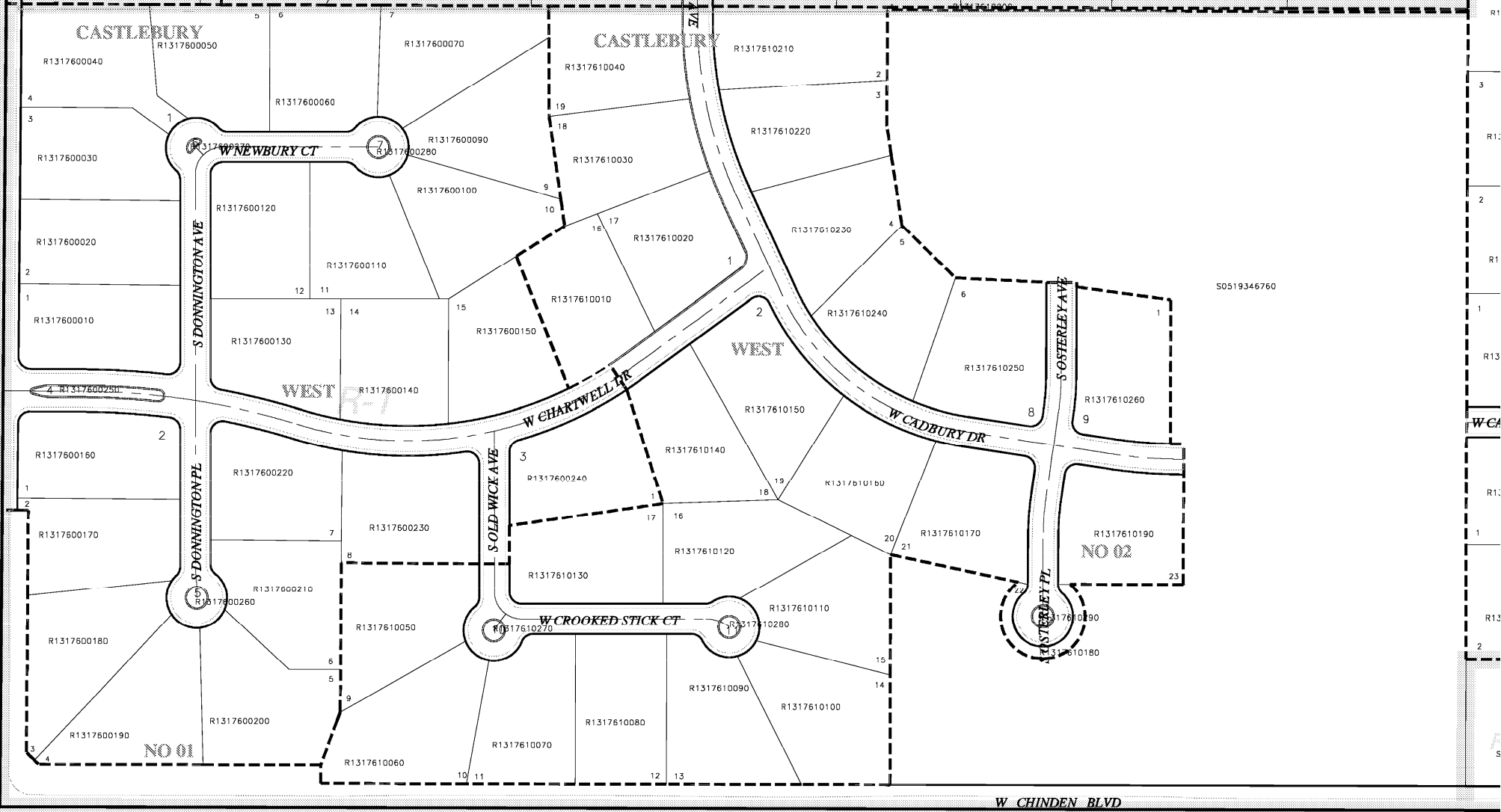
**geoAdvantage**  
[www.digitshare.org](http://www.digitshare.org) 208.777.1252

RS 1281  
S0519325745

RS 6973

Zinger Lateral

NO 02



S0519346760

NO 02

NO 01



