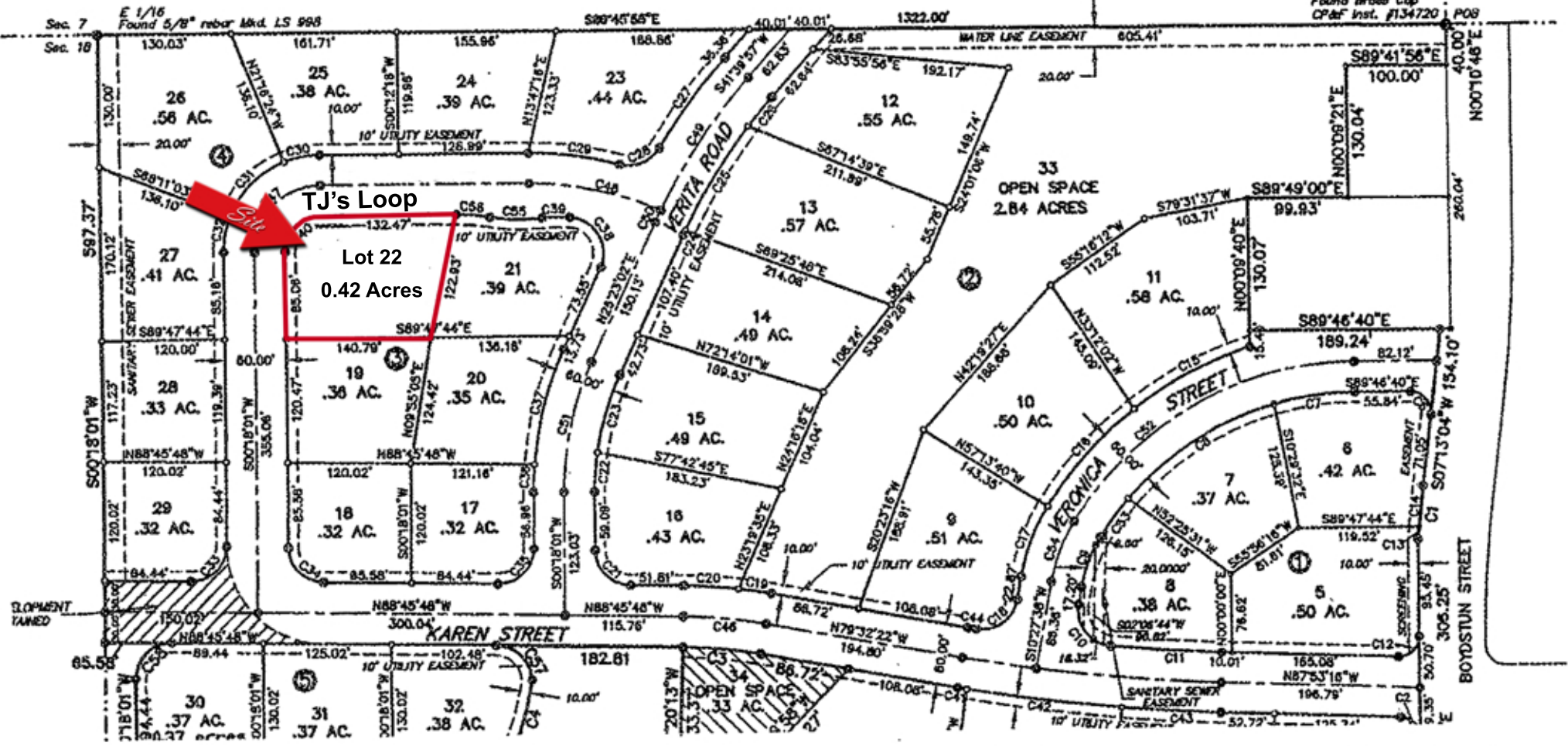


NE Cor. Sec. 18
Found Brass Cap
CP&F Inst. #134720



Tj's Loop
Lot 22
0.42 Acres

SLOPEMENT
TAINED

3.57 OPEN
3.57 AC

SANITARY SEWER
EASEMENT

BOYDSTON STREET

VERONICA
STREET

VERITA ROAD

KAREN STREET

OPEN SPACE
2.84 ACRES

Sec 7
F 1/16
Found 5/8" rebar Mk'd. LS 998

Sec 10

Sec 18

NOOTD 46' E

NOOTD 21' E

NOOTD 154.10' W

NOOTD 305.25' W

NOOTD 50.70' W

NOOTD 9.35' W

WATER LINE EASEMENT 605.41'

26
.56 AC.

25
.38 AC.

24
.39 AC.

23
.44 AC.

12
.55 AC.

27
.41 AC.

21
.39 AC.

28
.33 AC.

20
.35 AC.

29
.32 AC.

18
.32 AC.

17
.32 AC.

15
.49 AC.

14
.49 AC.

10
.50 AC.

7
.37 AC.

6
.42 AC.

30
.37 AC.

31
.37 AC.

32
.38 AC.

33
.46 AC.

9
.51 AC.

8
.38 AC.

5
.50 AC.