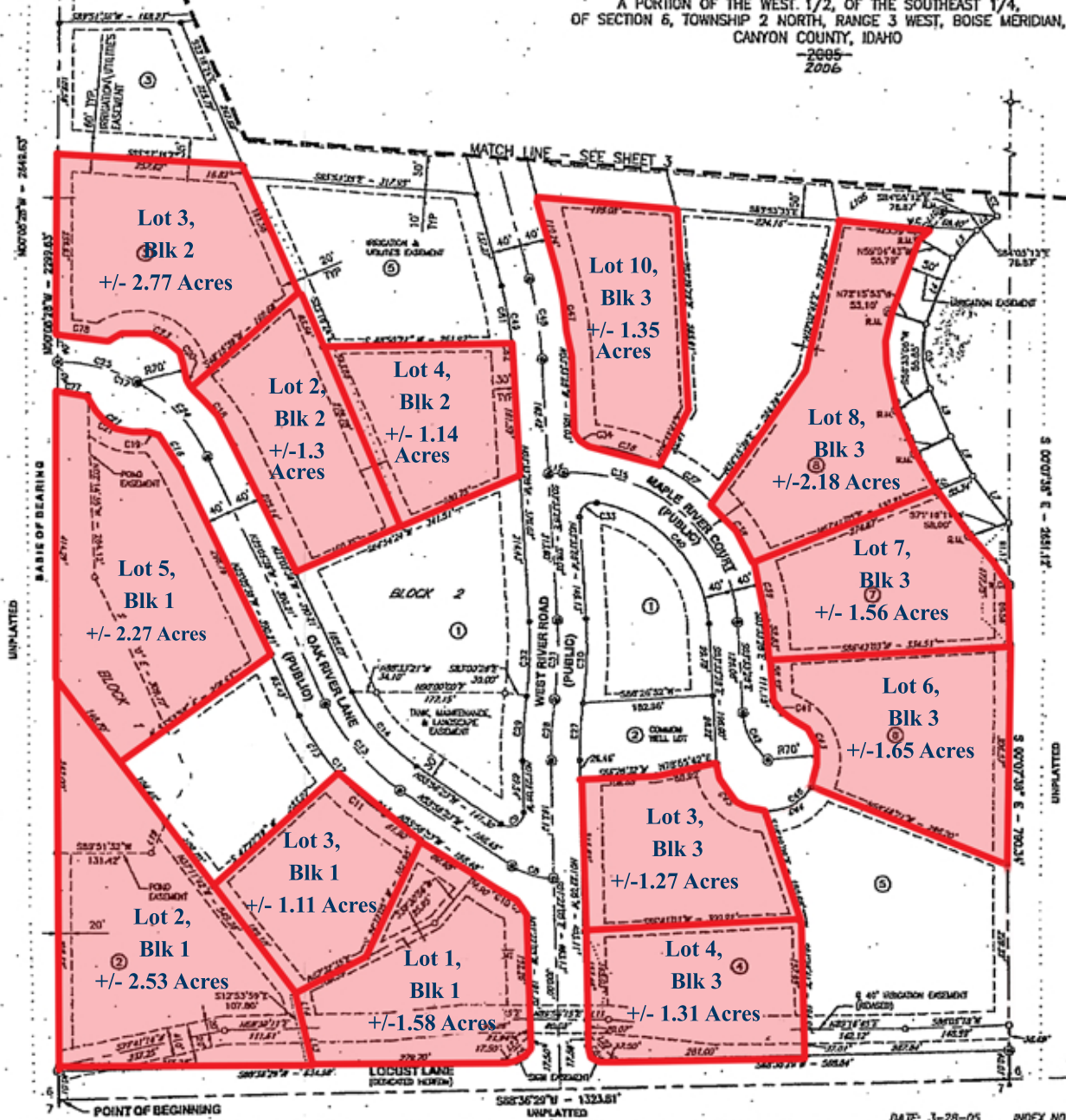


WEST RIVER SUBDIVISION

A PORTION OF THE WEST 1/2, OF THE SOUTHEAST 1/4,
OF SECTION 6, TOWNSHIP 2 NORTH, RANGE 3 WEST, BOISE MERIDIAN,
CANYON COUNTY, IDAHO

2005
2006



LINE TABLE		
LINE	LENGTH	BEARING
L1	25.57	N88°12'40"E
L2	35.59	S54°00'54"W
L3	52.09	S40°55'16"W
L4	101.49	S71°15'19"W
L5	74.29	S72°26'06"E
L6	64.45	S20°12'22"E
L7	84.51	S77°13'27"E
L8	24.08	S57°09'40"E
L9	50.63	S17°21'52"E
L10	32.62	N40°35'16"E
L11	30.51	S89°56'15"W
L12		NOT USED
L13	53.01	N12°53'59"W
L14	54.79	N12°41'59"W
L15	21.14	S86°26'32"W
L16		NOT USED
L17		NOT USED
L18	72.86	N25°39'59"E
L19	46.17	S25°10'59"W
L20		NOT USED
L21		NOT USED
L22	53.01	S45°22'49"W
L23	53.01	N45°11'12"E
L24	29.37	N63°11'28"W
L25	39.00	S85°26'12"W
L26	15.27	N27°33'28"E
L27	36.29	S01°20'00"E
L28	50.48	S85°32'00"E
L29	47.25	N25°33'28"E
L30	45.16	S21°22'02"E
L31	30.00	S28°17'55"W
L32		NOT USED
L33	34.67	N44°06'41"E
L34	19.56	N20°02'31"E
L35	64.25	S59°24'06"E
L36	42.82	S21°16'57"E
L37	87.92	S26°43'03"W
L38	48.17	S21°22'02"E
L39	78.18	N24°20'10"W
L40	20.00	S25°19'50"W
L41	57.54	N28°14'57"E
L42	13.00	N21°44'01"E
L43	65.72	S28°15'52"E
L44	28.85	N24°20'10"W
L45	10.11	S20°02'05"W
L46	74.68	S24°41'50"E
L47		NOT USED
L48	80.26	S1°16'49"E
L49	57.00	S75°43'11"W
L50	89.42	N1°16'49"W
L51	9.74	S25°07'34"E
L52	10.62	S21°26'41"E
L53	66.43	S68°46'21"E
L54		NOT USED
L55	151.53	N28°46'21"W
L56	69.70	N54°18'20"E
L57	48.08	N40°24'06"E
L58	52.98	N29°52'31"E
L59	97.31	S20°07'29"W
L60		NOT USED
L61	10.00	N22°18'55"W

- LEGEND**
- FOUND SECTION COR. MONUMENT
 - FOUND 1/4 COR. MONUMENT
 - FOUND 1/16 COR. MONUMENT
 - FOUND MONUMENT AS NOTED
 - SET 5/8" IRON PIN W/ PLASTIC CAP PLS 9095
 - SET 1/2" IRON PIN W/ PLASTIC CAP PLS 9095
 - COMPUTED POINT
 - W.C. WITNESS CORNER
 - R.M. REFERENCE MONUMENT
 - BOUNDARY LINE
 - LOT LINE
 - RIGHT-OF-WAY LINE
 - EASEMENT LINE
 - RELOCATED GRAVITY EASEMENT LINE
 - SECTION LINE
 - CENTER LINE
 - TIE LINE
 - LOT NUMBER



LEAVITT & ASSOCIATES ENGINEERS, INC.
STRUCTURAL & CIVIL SURVEYING
2324 1ST STREET SOUTH, MARA, IDAHO 83403
PHONE (208) 823-4375 FAX (208) 823-4144